

TRC-LPM-4

TRC-LPM-5

LED WATTAGE CHART

DRIVE CURRENT	16L	32L	48L	64L
400 milliamps	21w (2,478-2,911 Lumens)	-	-	-
530 milliamps	28w (3,508-3,776 Lumens)	-	-	-
700 milliamps	36w (4,385-4,720 Lumens)	71w (8,770-9,439 Lumens)	104w (8,770-9,439 Lumens)	136w (17,539-18,897 Lumens)
1050 milliamps	56w (6,022-6,482 Lumens)	106w (11,797-12,698 Lumens)	156w (17,360-18,686 Lumens)	205w (22,627-24,355 Lumens)

FORM

- Elegant Rectilinear Extruded Aluminum Housing
- Corrosion Resistant Stainless Steel External Hardware
- Sleek, Low Profile Housing
- Spec Grade Performance
- Engineered For Optimum Thermal Management
- 10 Architectural Finishes
Standard, RAL Colors Available

FUNCTION

- Micro Optics IES Distributions 15°, 30°, 55°, 85°, T2, T3, T3M, T4FTW, T5W
- 0-10V Dimming Drivers
THD @ Max Load < 15%
Power factor @ Max Load < 0.95
- Amber, 2700K, 3000K, 3500K, 4000K, or 5000K
- 64L LED
- 21-205 Watts
- CRI 70, 80, or 90
- Extruded Aluminum Heat Sink
- 5 Mils Powder Coat
- Aluminum Pole .250 Wall

RELIABILITY

- Silicone Micro Optics
- 5 Year Standard Warranty
- IP67 Optics
- Reduces Energy Consumption And Costs Up To 65%

BUY AMERICAN

To ensure the latest BAA/TAA/BABA Standards are being met, please select BAA, TAA, or BABA in the options section. Please contact the factory before placing an order for any NLS products requesting BAA (Buy American Act), TAA (Trade American Act), or BABA (Build America, Buy America).



Project Name:

Type:

TRAC LINEAR PENDANT MOUNT - ORDERING GUIDE

Cat#	Light Dist.	# of LED's	Drive Current	Color Temp./CRI	Voltage
TRAC 4 Linear Pendant (TRC-LPM-4) ¹⁶	15° Very Narrow Beam (15)	64 LED (64L) ¹⁶	350mA (35)	Amber LED Standard Turtle Friendly 595nm Dominant Wavelength (AMBER) 1, 7, 8	120-277 (UNV)
TRAC 5 Linear Pendant (TRC-LPM-5) ¹⁷	30° Narrow Beam (30)	80 LED (80L) ¹⁷	530mA (53)	Amber LED Phosphor Converted (AMBER/PC) ²	347-480 (HV)
	55° Medium Beam (55)		700mA (7)	2700K, 70 CRI (27K7) ²	
	85° Wide Beam (85)			2700K, 80 CRI (27K8) ²	
	Type 2 (T2)			3000K, 70 CRI (30K7) ²	
	Type 3 (T3)			3000K, 80 CRI (30K8) ²	
	Type 3 Medium (T3M)			3500K, 80 CRI (35K8) ²	
	Type 4 Forward Throw Wide (T4FTW)			4000K, 70 CRI (40K7) ²	
	Type 5 Wide (T5W)			4000K, 80 CRI (40K8) ²	
				5000K, 70 CRI (50K7) ²	
				5000K, 80 CRI (50K8) ²	

Mounting	Color	Controls Options	Options	Lens Options
Pendant Mount 12" Length (PM12)	Bronze Textured (BRZ)	Nema 7-Pin Receptacle (PE7)	Black Optical Frame (BOF)	Clear Tempered Glass Lens (CTG) ¹⁸
24" Length (PM24)	White Textured (WHT)	Photocell + Receptacle (PCR)	Dual Circuit Option (DC) ^{8, 15}	Diffused Polycarbonate Visual Comfort Lens (DPCL)
36" Length (PM36)	Smooth White Gloss (SWT)	Receptacle + Shorting Cap (PER)	Emergency Battery 4W (EM4)	HAL Lens (HAL) ¹⁰
Custom Length (PMX)	Silver Metallic (SVR)	FSP-211 w/Motion Sensor/Photocell 8' Heights & Below (FSP-8-L) ^{12, 14, 19}	Emergency Battery 8W (EM8) ¹⁵	
	Black Textured (BLK)	9 -20' Heights (FSP-8-R) ^{12, 14, 19}	Marine Grade Finish (MGF)	
	Smooth Black Gloss (SBK)	9 -20' Heights (FSP-20-L) ^{12, 14, 19}	Rotate Optic Left (ROL)	
	Graphite Textured (GPH)	FSP-221 w/Motion Sensor/Photocell 8' Heights & Below (FSP-HV-8-L) ^{13, 14, 19}	Rotate Optic Right (ROR)	
	Grey Textured (GRY)	9 -20' Heights (FSP-HV-8-L) ^{13, 14, 19}	Tamper Proof Hardware (TPH)	
	Green Textured (GRN)	9 -20' Heights (FSP-HV-20-L) ^{13, 14, 19}	Buy American Act (BAA) ⁶	
	Hunter Green Textured (HGN)	9 -20' Heights (FSP-HV-20-R) ^{13, 14, 19}	Trade Agreement Act (TAA) ⁶	
	Custom (CS)	Custom Controls Integration (CCI) ¹¹	Build America Buy American (BABA) ⁶	
		FSP Remote (FSIR) ¹⁴		

NOTES:

- Consult Factory for Lead Time.
- Consult Factory for 90 CRI Requests.
- Consult factory for all BAA/TAA/BABA requests
- 120V-277V
- 347V - 480V
- 3000K CCT or lower must be selected to meet International Dark-Sky Association certification.
- Turtle Safe
- Not available over 530mA
- Not available over 700mA
- HAL Lens: Yellow Polycarbonate Lens – less than 2% Blue Light Content
- Please contact Factory for Custom Control Integration requests (nLight, NX, WaveLinx, Creston, DMX/RDM, Synapse, Casambi, Dali II, Avi-On, or other control systems)
- FSP-211, 120V/277VAC (800W/1200W Max), 230-240VAC (300W Max), 50/60Hz Single Phase. Field/Site Line Voltage must be disclosed for project validation.
- FSP-221, 100-347VAC, 50/60Hz Single Phase, 208/230/480VAC, 50/60Hz Phase-to-Phase. 120VAC (800W Max), 230-240VAC (300W Max), 277/347/480VAC (1200W Max). Field/Site Line Voltage must be disclosed for project validation.
- Projects with sensors require Qty. 1 FSIR per project
- Dual Circuit Option (requires LPM-4 or LPM-5 housing)
- TRC-LPM-4 - 64L Only
- TRC-LPM-5 - 80L Only
- Standard with Clear Tempered Glass Lens
- FSP requires a sidecar mount, L for the leftside and R for the rightside of the fixture.



701 Kingshill Place, Carson, CA 90746
Call Us Today (310) 341-2037

nslighting.com

PRODUCT SPECIFICATIONS

ELECTRICAL

- 120-277 Volts (UNV) or 347-480 Volts (HV)
- 0-10V dimming driver
- Driver power factor at maximum load is $\geq .95$, THD maximum load is 15%
- LED Drivers Ambient Temp. Min is -40°C and Ambient Temp. Max ranges from 50°C to 55°C and, in some cases, even higher. Consult the factory for revalidation by providing the fixture catalog string before quoting and specifying it.
- All drivers, controls, and sensors housed in enclosed compartment
- CRI 70, 80, or 90
- Color temperatures: Amber, 2700K, 3000K, 3500K, 4000K, 5000K
- Surge Protection: 20KA optional.

CONSTRUCTION

- Formed Aluminum
- Internal cooling fins
- Corrosion resistant external hardware
- One-piece silicone gasket ensures water tight seal for electronics compartment
- Two-piece silicone Micro Optic system ensures IP67 seal around each PCB

OPTIONS

- MARINE GRADE FINISH (MGF)—A multi-step process creating protective finishing coat against harsh environments. Chemically washed in a 5 stage cleaning system. Pre-baked, Powder coated 3-5 mils of Zinc Rich Super Durable Polyester Primer. Oven Baked. Finished Powder Coating of Super Durable Polyester Powder Coat 3-5 mil thickness.
- Emergency Battery Backup 8W (EM8)
- Dimming Control (FSP-20) (FSP-40)
- Rotated Optics (ROL) (ROR)

CONTROLS

- Button Type Photo Cell (PC)
- FSP-211 with Motion Sensor (FSP-XX)—Passive infrared (PIR) sensor providing multi-level control based on motion/daylight contribution. 120V-277V (UNV)
- FSP-221 with Motion Sensor (FSP-XX)—Passive infrared (PIR) sensor providing multi-level control based on motion/daylight contribution. 347V-480V (HV)
- All control parameters adjustable via wireless configuration remote storing and transmitting sensor profiles.
- FSP-20 mounting heights 9-20 feet
- Includes 5 dimming event cycles, 0-10V dimming with motion sensing, re-programmable in the field.
- Motion sensor mounted to access cover
- FSIR-100 commissioning remote is required to change sensor settings.
- Please contact factory for ordering.
- Controls Agnostic: Please contact factory for your preferred controls option. (nLight, NX, WaveLinx, Crestron, DMX/RDM, Synapse, Casambi, DALI II, Avi-On, or other control systems)

FINISH

- 3-5 mils electrostatic powder coat.
- NLS Lighting standard high-quality finishes prevent corrosion and protects against extreme environmental conditions.

WARRANTY

Five-year limited warranty for drivers and LEDs.

OPTICS

Silicone optics high thermal stability and light output provide higher powered LEDs with minimized lumen depreciation. UV stability with scratch resistance increases exterior application durability. Silicone optics do not yellow, crack or brittle over time.

LISTINGS

- UL Listed in compliance with UL 1598, the Standard for Safety of Luminaires, including the applicable wet location requirements
- Compliant with UL 8750 LED driver design and test safety standards
- CSA C22.2 No. 250.0

BUY AMERICAN OPTION

While all of the NLS Lighting products listed in this document qualify for the Buy America(n) Act of 1933, we reserve the right to change our listings without notice.

The information provided above is for general informational purposes only. We encourage you to consult legal professionals for advice particular to your projects concerning BAA, TAA, BABA or Buy America.

Additional NLS Products that meet BAA, TAA standards can be found at the following link:

<https://nslighting.com/buy-american/>



The information and specifications on this document are subject to change without any notification. All values are design, nominal, typical or prorated values when measured under internal and external laboratory conditions.



701 Kingshill Place, Carson, CA 90746
Call Us Today (310) 341-2037

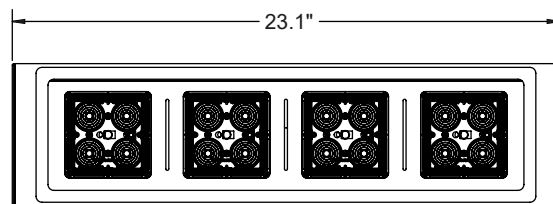
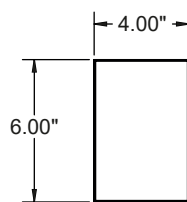
nslighting.com

PRODUCT SPECIFICATIONS

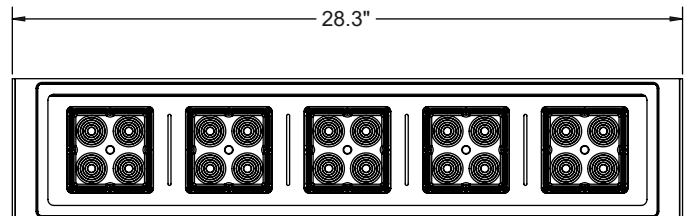
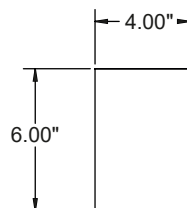
MODEL	WIDTH	HEIGHT	LENGTH	LED COUNT
TRC-LPM-4	6"	4"	23.1"	16L, 32L, 48L, or 64L
TRC-LPM-5	6"	4"	28.3"	16L, 32L, 48L, or 64L

DIMENSIONS

TRC-LPM-4

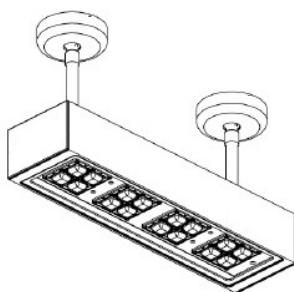


TRC-LPM-5

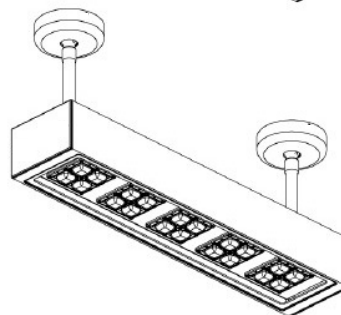


MOUNTINGS

LINEAR PENDANT MOUNT - 12" (LPM12), 24" (LPM24) or 36" (LPM36)



TRC-LPM-4-12



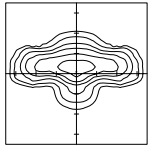
TRC-LPM-5-12

PRODUCT SPECIFICATIONS

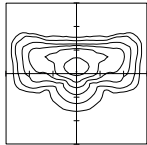
OPTICS

Silicone optics high photothermal stability and light output provides higher powered LEDs with minimized lumen depreciation LED life. UV and thermal stability with scratch resistance increases exterior application durability.

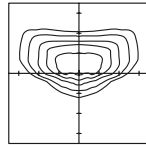
IES Types



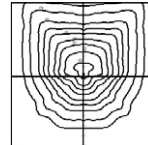
TYPE II (T2)



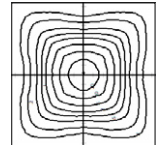
TYPE III (T3)



TYPE III M (T3M)

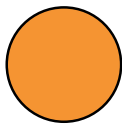


TYPE IV FORWARD (T4FTW)

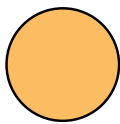


TYPE V WIDE (T5W)

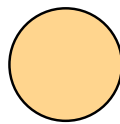
LED KELVIN RANGE



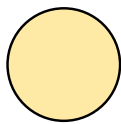
AMBER
585-600 nm



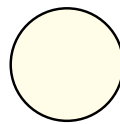
2700K 70 CRI



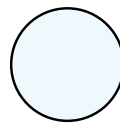
3000K 70 CRI



3500K 80 CRI



4000K 70 CRI



5000K 70 CRI

Color	Dominant or Peak Wavelength Range (nm)	
	Minimum	Maximum
Amber	585	600

Lumen Maintenance Data							
Ambient Temperature	Drive Current	L90 Hours*	L70 Hours**	30,000 Hours*	50,000 Hours*	60,000 Hours*	100,000 Hours**
25°C	Up to 700mA	58,000	173,000	95.7%	91.6%	89.6%	82.1%
	1050mA	48,000	143,000	94.3%	89.5%	87.2%	78.5%

*Reported extrapolations per IESNA TM-21 **Projected extrapolations per IESNA TM-21

MULTIPLIERS FOR 70/80/90 CRI (Scaling Factor from 5000K 70 CRI)			
CRI	70 CRI	80 CRI	90 CRI
2700K	0.8560	0.8015	0.6445
3000K	0.9255	0.8594	-
3500K	-	0.8594	-
4000K	1.000	0.9255	-
5000K	1.000	0.9255	-

PRODUCT SPECIFICATIONS

LUMEN CHARTS

TRC-LPM-4 UPDATED LUMEN CHART																	
PART NUMBER	15°	LM/W	30°	LM/W	55°	LM/W	85°	LM/W	T2	LM/W	T3	LM/W	T4FTW	LM/W	T5W	LM/W	WATTAGE
TRC-LPM-4-64L-35-27K7	9139	134	8511	125	8568	126	8593	126	7940	117	7768	114	7026	103	7311	108	68
TRC-LPM-4-64L-35-27K8	8519	125	7933	117	7987	117	8010	118	7401	109	7241	106	6549	96	6815	100	68
TRC-LPM-4-64L-35-30K7	10608	156	9879	145	9945	146	9974	147	9216	136	9017	133	8155	120	8486	125	68
TRC-LPM-4-64L-35-30K8	9194	135	8562	126	8619	127	8644	127	7987	117	7815	115	7068	104	7355	108	68
TRC-LPM-4-64L-35-35K8	9226	136	8592	126	8650	127	8675	128	8015	118	7842	115	7093	104	7381	109	68
TRC-LPM-4-64L-35-40K7	10880	160	10132	149	10200	150	10230	150	9452	139	9248	136	8364	123	8704	128	68
TRC-LPM-4-64L-35-40K8	9792	144	9119	134	9180	135	9207	135	8507	125	8323	122	7528	111	7834	115	68
TRC-LPM-4-64L-35-50K7	10880	160	10132	149	10200	150	10230	150	9452	139	9248	136	8364	123	8704	128	68
TRC-LPM-4-64L-35-50K8	9792	144	9119	134	9180	135	9207	135	8507	125	8323	122	7528	111	7834	115	68
TRC-LPM-4-64L-53-27K7	12978	126	12026	117	12113	118	12142	118	11161	108	10902	106	9777	95	10209	99	103
TRC-LPM-4-64L-53-27K8	12097	117	11210	109	11291	110	11318	110	10404	101	10162	99	9113	88	9517	92	103
TRC-LPM-4-64L-53-30K7	15064	146	13959	136	14060	137	14094	137	12955	126	12654	123	11348	110	11850	115	103
TRC-LPM-4-64L-53-30K8	13055	127	12098	117	12185	118	12214	119	11228	109	10966	106	9835	95	10270	100	103
TRC-LPM-4-64L-53-35K8	13102	127	12141	118	12228	119	12258	119	11267	109	11005	107	9870	96	10307	100	103
TRC-LPM-4-64L-53-40K7	15450	150	14317	139	14420	140	14455	140	13287	129	12978	126	11639	113	12154	118	103
TRC-LPM-4-64L-53-40K8	13905	135	12885	125	12978	126	13010	126	11958	116	11680	113	10475	102	10939	106	103
TRC-LPM-4-64L-53-50K7	15450	150	14317	139	14420	140	14455	140	13287	129	12978	126	11639	113	12154	118	103
TRC-LPM-4-64L-53-50K8	13905	135	12885	125	12978	126	13010	126	11958	116	11680	113	10475	102	10939	106	103
TRC-LPM-4-64L-7-27K7	16115	118	14787	109	14900	110	14907	110	13591	100	13198	97	11747	86	12320	91	136
TRC-LPM-4-64L-7-27K8	15021	110	13783	101	13889	102	13895	102	12669	93	12302	90	10950	81	11484	84	136
TRC-LPM-4-64L-7-30K7	18704	138	17163	126	17295	127	17302	127	15776	116	15319	113	13635	100	14300	105	136
TRC-LPM-4-64L-7-30K8	16210	119	14875	109	14989	110	14995	110	13672	101	13277	98	11817	87	12394	91	136
TRC-LPM-4-64L-7-35K8	16268	120	14927	110	15042	111	15049	111	13721	101	13324	98	11859	87	12438	91	136
TRC-LPM-4-64L-7-40K7	19184	141	17603	129	17738	130	17746	130	16180	119	15712	116	13985	103	14667	108	136
TRC-LPM-4-64L-7-40K8	17266	127	15843	116	15964	117	15971	117	14562	107	14141	104	12587	93	13200	97	136
TRC-LPM-4-64L-7-50K7	19184	141	17603	129	17738	130	17746	130	16180	119	15712	116	13985	103	14667	108	136
TRC-LPM-4-64L-7-50K8	17266	127	15843	116	15964	117	15971	117	14562	107	14141	104	12587	93	13200	97	136

TRC-LPM-5 UPDATED LUMEN CHART																	
PART NUMBER	15°	LM/W	30°	LM/W	55°	LM/W	85°	LM/W	T2	LM/W	T3	LM/W	T4FTW	LM/W	T5W	LM/W	WATTAGE
TRC-LPM-5-80L-35-27K7	11495	135	10781	127	11067	130	11101	131	10282	121	10424	123	9282	109	9996	118	85
TRC-LPM-5-80L-35-27K8	10715	126	10050	118	10316	121	10347	122	9584	113	9717	114	8652	102	9318	110	85
TRC-LPM-5-80L-35-30K7	13343	157	12514	147	12846	151	12885	152	11934	140	12100	142	10774	127	11603	137	85
TRC-LPM-5-80L-35-30K8	11564	136	10846	128	11133	131	11167	131	10343	122	10486	123	9337	110	10056	118	85
TRC-LPM-5-80L-35-35K8	11605	137	10884	128	11172	131	11206	132	10380	122	10524	124	9370	110	10091	119	85
TRC-LPM-5-80L-35-40K7	13685	161	12835	151	13175	155	13215	155	12240	144	12410	146	11050	130	11900	140	85
TRC-LPM-5-80L-35-40K8	12317	145	11552	136	11858	140	11894	140	11016	130	11169	131	9945	117	10710	126	85
TRC-LPM-5-80L-35-50K7	13685	161	12835	151	13175	155	13215	155	12240	144	12410	146	11050	130	11900	140	85
TRC-LPM-5-80L-35-50K8	12317	145	11552	136	11858	140	11894	140	11016	130	11169	131	9945	117	10710	126	85
TRC-LPM-5-80L-53-27K7	16666	130	15160	118	15590	122	15641	122	14408	113	14623	114	12902	101	13978	109	128
TRC-LPM-5-80L-53-27K8	15535	121	14132	110	14532	114	14579	114	13430	105	13630	106	12027	94	13029	102	128
TRC-LPM-5-80L-53-30K7	19344	151	17597	137	18096	141	18155	142	16723	131	16973	133	14976	117	16224	127	128
TRC-LPM-5-80L-53-30K8	16765	131	15251	119	15683	123	15734	123	14493	113	14710	115	12979	101	14061	110	128
TRC-LPM-5-80L-53-35K8	16824	131	15305	120	15739	123	15790	123	14545	114	14762	115	13025	102	14111	110	128
TRC-LPM-5-80L-53-40K7	19840	155	18048	141	18560	145	18620	145	17152	134	17408	136	15360	120	16640	130	128
TRC-LPM-5-80L-53-40K8	17856	140	16243	127	16704	131	16758	131	15437	121	15667	122	13824	108	14976	117	128
TRC-LPM-5-80L-53-50K7	19840	155	18048	141	18560	145	18620	145	17152	134	17408	136	15360	120	16640	130	128
TRC-LPM-5-80L-53-50K8	17856	140	16243	127	16704	131	16758	131	15437	121	15667	122	13824	108	14976	117	128
TRC-LPM-5-80L-7-27K7	20611	122	18530	110	19128	113	19216	114	17667	105	17889	106	15626	92	17026	101	169
TRC-LPM-5-80L-7-27K8	19212	114	17273	102	17830	106	17912	106	16468	97	16675	99	14565	86	15871	94	169
TRC-LPM-5-80L-7-30K7	23924	142	21509	127	22202	131	22304	132	20506	121	20764	123	18137	107	19762	117	169
TRC-LPM-5-80L-7-30K8	20734	123	18641	110	19241	114	19330	114	17772	105	17995	106	15719	93	17127	101	169
TRC-LPM-5-80L-7-35K8	20807	123	18707	111	19310	114	19399	115	17835	106	18059	107	15774	93	17188	102	169
TRC-LPM-5-80L-7-40K7	24537	145	22060	131	22771	135	22876	135	21032	124	21296	126	18602	110	20269	120	169
TRC-LPM-5-80L-7-40K8	22083	131	19854	117	20494	121	20588	122	18929	112	19166	113	16742	99	18242	108	169
TRC-LPM-5-80L-7-50K7	24537	145	22060	131	22771	135	22876	135	21032	124	21296	126	18602	110	20269	120	169
TRC-LPM-5-80L-7-50K8	22083	131	19854	117	20494	121	20588	122	18929	112	19166	113	16742	99	18242	108	169



701 Kingshill Place, Carson, CA 90746
 Call Us Today (310) 341-2037

nlsighting.com