

LED WATTAGE CHART

	16L
400 milliamps	21w
530 milliamps	26w
700 milliamps	35w

The Sea Side Bollard is a combination of security, style and Vandal resistance that blends beautifully into any pathway environment.

This luminaire tower can disperse light in 45° angle with the cast Cutoff Grill (COG45). Paracline Reflector (PR) or Stacked Louver (SL) are also optional light distributions.

The Sea Side Bollard uses the patented Star Power™ reflector system. The Dome Top selection offers either Dome or Flat and are available in either 8" or 6" Round or 8" Square. Kelvin temperature offering of Amber, 2700K, 3000K, 3500K, 4000K and 5000K.

Conforms to the strictest Made in America standards designed, tooled, fabricated and assembled in the USA.

BUY AMERICAN

To ensure the latest BAA/TAA/BABA Standards are being met, please select BAA, TAA, or BABA in the options section. Please contact the factory before placing an order for any NLS products requesting BAA (Buy American Act), TAA (Trade American Act), or BABA (Build America, Buy America).



STAR POWER™ OPTICAL SYSTEM

The Star Power™ reflector is an excellent system which provides great value and performance. Star Power Patent number: 10168023

Project Name:

Type:

SEA SIDE BOLLARD ORDERING GUIDE

Cat#	Height	Shaft Dim.	Light Dist.	# of LEDs	Miliamps
Sea Side Flat Top (SSF)	26" (2)	6" Round (6R) ³	Cut Off Grill (COG45)	16 (16L)	400 (40)
Sea Side Dome Top (SSD) ³	36" (3)	8" Round (8R) ³	Stacked Louver (SL)		530 (53)
	42" (4)	8" Square (8S)	Paracline Reflector (PR)		700 (7)

Kelvin	Volts	Mounting	Color	Options
Amber 585-600nm (AMBER) ^{5,7,8}	120-277 (UNV)	Anchor Base (AB)	Bronze Textured (BRZ)	Button Photocell (PC) ²
Amber LED Phosphor Converted (AMBER/PC) ^{7,8}	347-480 (HV)		White Textured (WHT)	Vandal Resistant Base (VRB)
2700K, 70 CRI (27K7)			Smooth White Gloss (SWT)	Marine Grade Finish (MGF)
2700K, 80 CRI (27K8) ¹			Silver Metallic (SVR)	House Side Shield (HSS)
3000K, 70 CRI (30K7)			Black Textured (BLK)	Surge Protector (20K)
3000K, 80 CRI (30K8) ¹			Smooth Black Gloss (SBK)	Buy American Act (BAA) ⁶
3500K, 80 CRI (35K8) ¹			Graphite Textured (GPH)	Trade Agreement Act (TAA) ⁶
4000K, 70 CRI (40K7)			Grey Textured (GRY)	Build America Buy American (BABA) ⁶
4000K, 80 CRI (40K8) ¹			Green Textured (GRN)	Custom Controls Integration (CCI) ⁴
5000K, 70 CRI (50K7)			Hunter Green Textured (HGN)	Integral GFCI Outlet (GFCI) ^{9,10}
5000K, 80 CRI (50K8) ¹			Custom (CS)	USB Charging Outlet (USB) ^{9,11}

NOTES:

1. Consult Factory for Lead Time. Consult Factory for 90 CRI Requests.
2. Universal Voltage 120-277
3. (SSD) Dome Top only available on Round shaft
4. Please contact Factory for Custom Control Integration requests (nLight, NX, WaveLinx, Crestron, DMX/RDM, Synapse, Casambi, Dali II, Avi-On, or other control systems)
5. Turtle Safe
6. Consult factory for all BAA/TAA/BABA requests
7. Consult Factory for Lead Time
8. Not Available above 530mA
9. 120V Only
10. GFCI installed 12" from base, street side. Contact Factory for custom height
11. USB - Specify location.



701 Kingshill Place, Carson, CA 90746
Call Us Today (310) 341-2037

nlsighting.com

PRODUCT SPECIFICATIONS

ELECTRICAL

- 120-277 Volts (UNV) or 347-480 Volts (HV)
- 0-10V dimming driver
- Driver power factor at maximum load is $\geq .95$, THD maximum load is 15%
- LED Drivers Ambient Temp. Min is -40°C and Ambient Temp. Max ranges from 50°C to 55°C and, in some cases, even higher. Consult the factory for revalidation by providing the fixture catalog string before quoting and specifying it.
- All internal wiring UL certified for 600 VAC and 105°C
- CRI 70, 80 or 90
- Color temperatures: Amber, 2700, 3000K, 3500K, 4000K, 5000K
- Surge Protection: 20kA supplied as standard.

CONSTRUCTION

- Extruded Aluminum. Cast Aluminum. Spun Aluminum

OPTIONS

- MARINE GRADE FINISH (MGF) - A multi-step process creating protective finishing coat against harsh environments. Chemically washed in a 5 stage cleaning system. Pre-baked, Powder coated 3-5 mils of Zinc Rich Super Durable Polyester Primer. Oven Baked. Finished Powder Coating of Super Durable Polyester Powder Coat 3-5 mil thickness.
- VANDAL RESISTANT BASE (VRB) - Includes an internal shaft welded to base plate with a mounting plate on top of the shaft to provide additional support for the bollard shaft.
- House Side Shield (HSS)
- 20ka Surge Protector (20K)
- Integral GFCI Outlet (GFCI)
- USB Charging Outlet (USB)

CONTROL OPTIONS

- PHOTOCELL (PC) - Button Type
- Controls Agnostic: Please contact factory for your preferred controls option. (nLight, NX, WaveLinx, Crestron, DMX/RDM, Synapse, Casambi, DALI II, Avi-On, or other control systems)

OPTICS

Recessed Star Power Optical System is 95% reflective material. Utilizes a linear diffused pattern, softening the light distribution and eliminating any dark shadows or striations.

FINISH

- 3-5 mils electrostatic powder coat.
- NLS Lighting standard high-quality finishes prevent corrosion and protects against extreme environmental conditions
- 10 Standard Finishes, Custom Finish and Marine Grade Finish Available

WARRANTY

Five-year limited warranty for drivers and LEDs.

BUY AMERICAN OPTION

While all of the NLS Lighting products listed in this document qualify for the Buy America(n) Act of 1933, we reserve the right to change our listings without notice.

The information provided above is for general informational purposes only. We encourage you to consult legal professionals for advice particular to your projects concerning BAA, TAA, BABA or Buy America.

Additional NLS Products that meet BAA, TAA standards can be found at the following link:

<https://nslighting.com/buy-american/>



The information and specifications on this document are subject to change without any notification. All values are design, nominal, or typical or prorated values when measured under internal and external laboratory conditions.

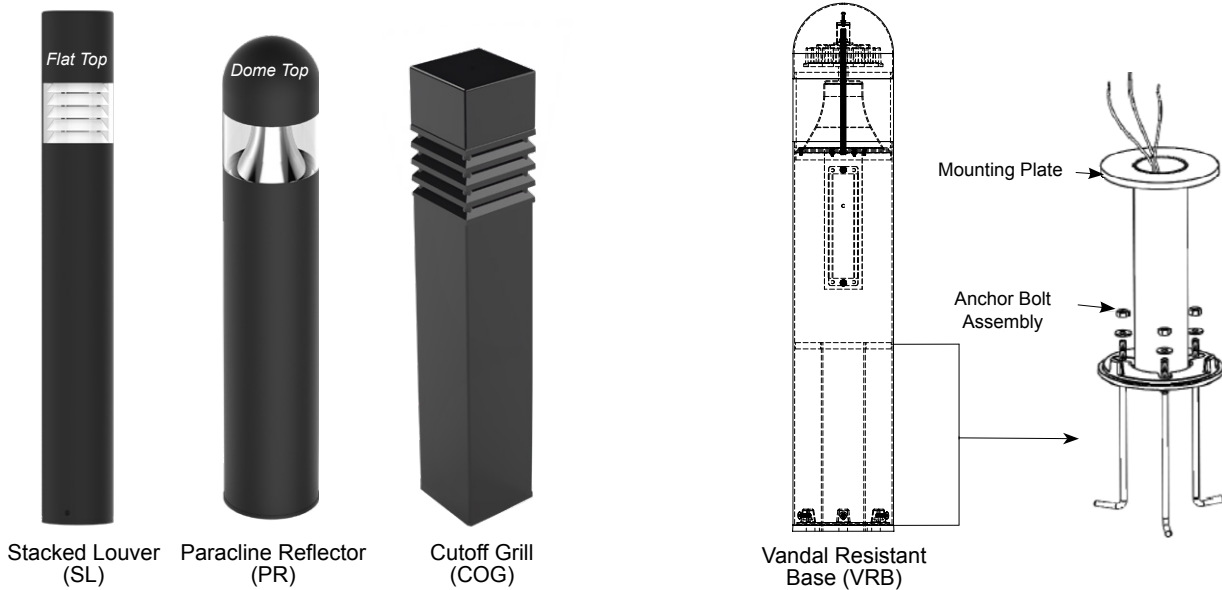
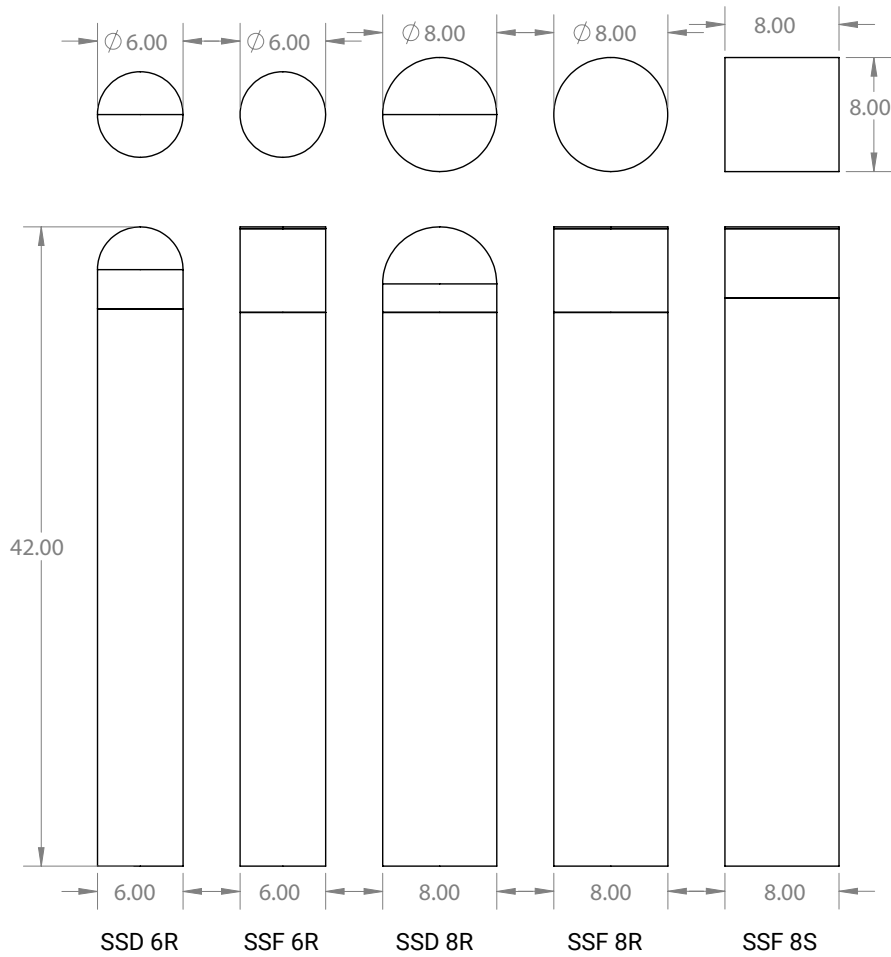


701 Kingshill Place, Carson, CA 90746
Call Us Today (310) 341-2037

nslighting.com

PRODUCT SPECIFICATIONS

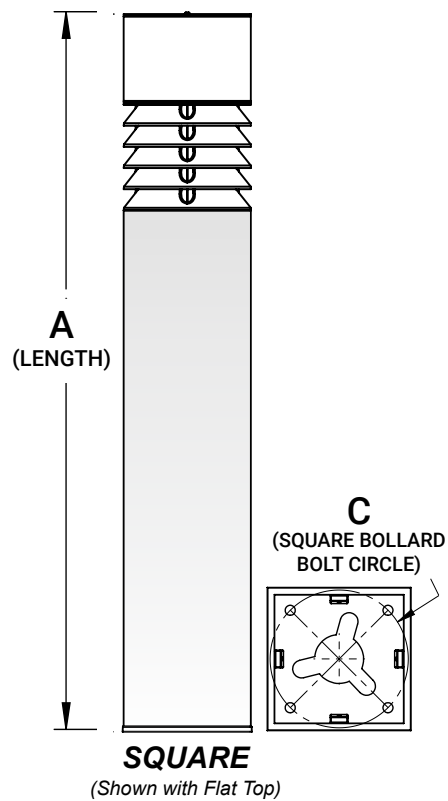
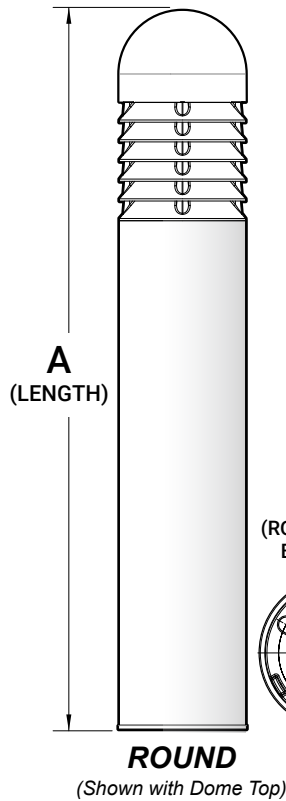
DIMENSIONS



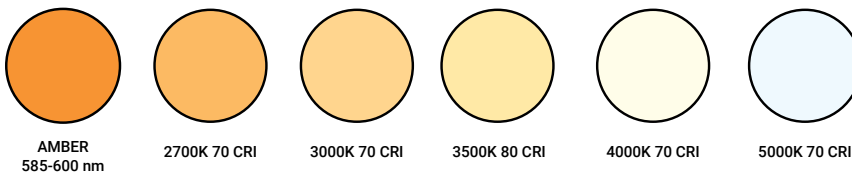
PRODUCT SPECIFICATIONS

DIMENSION	6" ROUND	8" ROUND
A	26", 36", or 42"	26", 36", or 42"
B	3-5/8"	6"

DIMENSION	8" SQUARE
A	26", 36", or 42"
C	7.75"



LED KELVIN RANGE



Color	Dominant or Peak Wavelength Range (nm)	
	Minimum	Maximum
Amber	585	600

LUMEN MAINTENANCE DATA							
Ambient Temperature	Drive Current	L90 Hours*	L70 Hours**	30,000 Hours*	50,000 Hours*	60,000 Hours*	100,000 Hours**
25°C	Up to 700mA	58,000	173,000	95.7%	91.6%	89.6%	82.1%
*Reported extrapolations per IESNA TM-21				**Projected extrapolations per IESNA TM-21			

PRODUCT SPECIFICATIONS

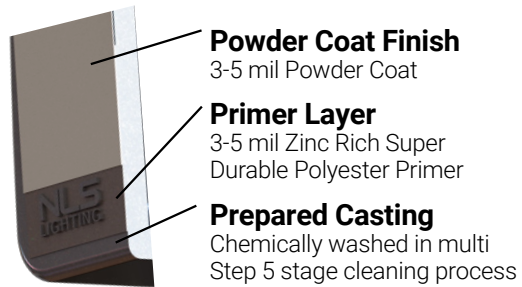
SEA SIDE BOLLARD - LUMEN DATA CHART

PART NUMBER	T5 LUMENS	T5 Lm/W	WATTS
SEA SIDE-COG45-16L-40-27K7	987	47	21
SEA SIDE-COG45-16L-40-27K8	924	44	21
SEA SIDE-COG45-16L-40-30K8	991	47	21
SEA SIDE-COG45-16L-40-30K7	1067	51	21
SEA SIDE-COG45-16L-40-35K8	991	47	21
SEA SIDE-COG45-16L-40-40K8	1067	51	21
SEA SIDE-COG45-16L-40-40K7	1153	55	21
SEA SIDE-COG45-16L-40-50K8	1067	51	21
SEA SIDE-COG45-16L-40-50K7	1153	55	21
SEA SIDE-COG45-16L-53-30K	1429	55	26
SEA SIDE-COG45-16L-53-40K	1502	58	26
SEA SIDE-COG45-16L-53-50K	1502	58	26
SEA SIDE-COG45-16L-7-30K	1906	53	36
SEA SIDE-COG45-16L-7-40K	2003	56	36
SEA SIDE-COG45-16L-7-50K	2003	56	36
SEA SIDE-SL-16L-40-27K7	1081	51	21
SEA SIDE-SL-16L-40-27K8	1012	48	21
SEA SIDE-SL-16L-40-30K8	1085	52	21
SEA SIDE-SL-16L-40-30K7	1169	56	21
SEA SIDE-SL-16L-40-35K8	1085	52	21
SEA SIDE-SL-16L-40-40K8	1169	56	21
SEA SIDE-SL-16L-40-40K7	1263	60	21
SEA SIDE-SL-16L-40-50K8	1169	56	21
SEA SIDE-SL-16L-40-50K7	1263	60	21
SEA SIDE-SL-16L-53-30K	1508	58	26
SEA SIDE-SL-16L-53-40K	1612	62	26
SEA SIDE-SL-16L-53-50K	1690	65	26
SEA SIDE-SL-16L-7-30K	2030	58	35
SEA SIDE-SL-16L-7-40K	2170	62	35
SEA SIDE-SL-16L-7-50K	2275	65	35
SEA SIDE-PR-16L-40-27K7	1397	67	21
SEA SIDE-PR-16L-40-27K8	1308	62	21
SEA SIDE-PR-16L-40-30K8	1402	67	21
SEA SIDE-PR-16L-40-30K7	1510	72	21
SEA SIDE-PR-16L-40-35K8	1402	67	21
SEA SIDE-PR-16L-40-40K8	1510	72	21
SEA SIDE-PR-16L-40-40K7	1632	78	21
SEA SIDE-PR-16L-40-50K8	1510	72	21
SEA SIDE-PR-16L-40-50K7	1632	78	21
SEA SIDE-PR-16L-53-30K	2002	77	26
SEA SIDE-PR-16L-53-40K	2106	81	26
SEA SIDE-PR-16L-53-50K	2184	84	26
SEA SIDE-PR-16L-7-30K	2695	77	35
SEA SIDE-PR-16L-7-40K	2835	81	35
SEA SIDE-PR-16L-7-50K	2975	85	35

PRODUCT SPECIFICATIONS

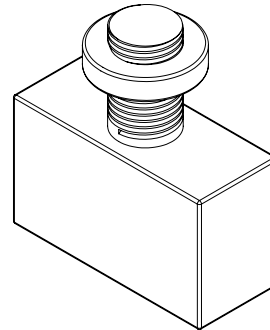
MARINE GRADE FINISH (MGF)

The **(MGF)** is a multi step process.
Chemically washed in a 5 stage cleaning system.
Pre-baked. Powder coated 3-5 mils of Zinc Rich Super Durable Polyester Primer. Oven Baked.
Finished Powder Coating of Super Durable Polyester Powder Coat 3-5 mil thickness.



BUTTON TYPE PHOTOCELL (PC)

Photocell for dusk to dawn operation.
Consult Factory.



LEVELING NUT DIAGRAM

