



Height

12' - 30'

Pole Shaft

The Pole shaft will be constructed of seamless extruded tube of 6063 aluminum alloy per the requirements of ASTM B221. The shaft assembly shall be full-length heat treated after base plate weld to produce a T6 temper.

Base

4-Bolt Cast Aluminum Base Flange of alloy 356-T6.

Anchor Bolts

All anchor bolts are hot dipped galvanized steel and come with two galvanized nuts and washers per bolt. Minimum yield strength 50,000 psi. Anchor bolts are not included for Custom Bolt Circle.

Nut Cover

Aluminum nut covers (alloy 356-F) and stainless steel hex head attaching screws.

Hand-Hole

4"-5" Butt Diameters - 2" x 4" Hand-hole with curved lap style aluminum door and 2 stainless steel self tapping screws. A ground provision incorporating a tapped 1/4"-20NC hole is provided.

6" Butt Diameter - Reinforced 3" x 5" curved cast aluminum frame (alloy 356 - T6) with aluminum door and 2 stainless steel hex head screws. A ground provision incorporating a tapped 3/8" hole is provided opposite of hand-hole.

7" + Butt Diameter - Reinforced 4" x 6" curved cast aluminum frame (alloy 356 - T6) with aluminum door and 2 stainless steel hex head screws. Reinforced frame will contain a tapped 3/8"-16NC grounding provision.

Pole Cap

All poles come with a removable polymer pole cap installed. All pole caps are black finish. Aluminum Pole Cap option is painted to match pole.

Finish

All poles are treated with sand blast media for a near white finish, power blasted with 100 psi prior to powder coat application. Poles are pre-heated then electrostatically applied polyester powder coat with a 3 to 5 mil thickness for maximum adherence.

Marine Grade Finish

All poles are washed through a 5-stage cleaning system with a deionized rinse, a 3 to 5 mils zinc rich durable polyester primer powder coat, followed by a 3 to 5 mils super durable polyester powder coat finish.

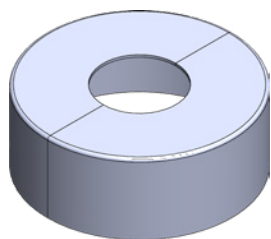
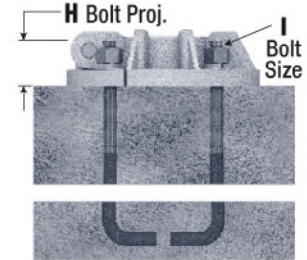
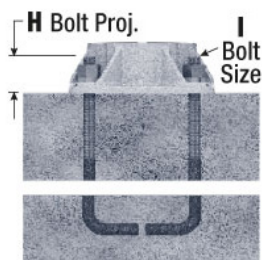
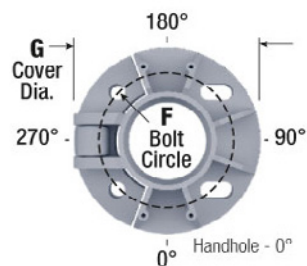
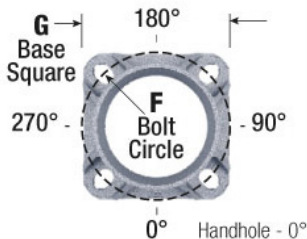
Vibration Dampener

The Vibration Dampener is factory installed. Field secured by contractor at the base during installation.

Buy American

To ensure the latest BAA/TAA/BABA Standards are being met, please select BAA, TAA, or BABA in the options section. Please contact the factory before placing an order for any NLS products requesting BAA (Buy American Act), TAA (Trade Agreement Act), or BABA (Build America, Buy America).

*Consult factory for EPA Data on RTAP



Optional Round Base Cover

Standard Base Detail

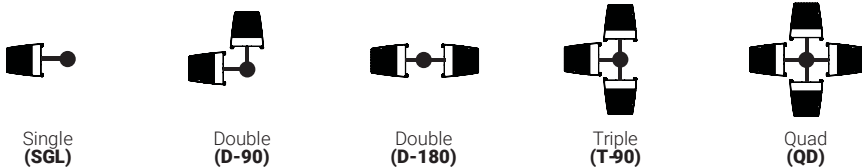
Optional Hinged Base Detail

CAUTION: Installation of poles without luminaire(s) will compromise pole strength. Any accessories attached to the pole, or other modifications done in the field, will compromise the pole strength and may result in pole failure. Wind load evaluations and provisions for appendages such as banner arms, signage, cameras, etc., must be evaluated and approved by the factory prior to placing an order. Additional evaluation and approval should be performed by the customer's local structural engineer on the project.

*Anchor Bolts are NOT included with Custom Bolt Circle.
 *Do NOT pour concrete referencing this drawing. Consult Factory.
 *Must Specify 4-Bolt Pattern.

*All wind loading calculations are based on sustained wind force plus an additional 1.3 gust.

MOUNTING CONFIGURATION



BUY AMERICAN OPTION

While all of the NLS Lighting products listed in this document qualify for the Buy America(n) Act of 1933, we reserve the right to change our listings without notice.

The information provided above is for general informational purposes only. We encourage you to consult legal professionals for advice particular to your projects concerning BAA, TAA, BABA or Buy America.

Additional NLS Products that meet BAA, TAA standards can be found at the following link:

<https://nslighting.com/buy-american/>



701 Kingshill Place, Carson, CA 90746
 Call Us Today (310) 341-2037

nslighting.com