



HEIGHT

10' - 20'

POLE SHAFT

Shall be Round Straight Aluminum 6063 Alloy Extrusion. Poles have ground lug welded inside hand hole opposite side of the Pole Extrusion. Pole shaft is welded to base plate on top and bottom of base plate.

INTERNAL SLEEVE

All poles over 12 feet come with welded internal sleeves to help strengthen the pole structure and minimize aeolian vibration issues.

BASE PLATE

Manufactured from aluminum. The Base Plate is 3/4" thick for poles 10 to 20 feet.

ANCHOR BOLTS

All anchor bolts are hot dipped galvanized steel and come with two galvanized nuts and washers per bolt. Minimum yield strength 50,000 psi. Anchor bolts are not included for Custom Bolt Circle.

BASE COVER

All base covers are fabricated two-piece 6063 aluminum and powder coated to match the pole. Square base cover comes standard, Round base cover optional.

HAND-HOLE

A reinforced hand-hole is 12" on center from the base plate and is constructed of 3"x 5" rectangular aluminum tubing which is welded to pole shaft for added strength. The hand-hole covers are provided with internal bridge support and powder coated to match pole finish.

POLE CAP

All poles come with a removable polymer pole cap installed. All pole caps are black finish. Aluminum Pole Cap option is painted to match pole.

FINISH

All poles are treated with sand blast media for a near white finish, power blasted with 100 psi prior to powder coat application. Poles are pre-heated then electrostatically applied AAMA 2604 polyester powder coat with a 3 to 5 mil thickness for maximum adherence.

MARINE GRADE FINISH

All poles are washed through a 5-stage cleaning system with a deionized rinse, a 3 to 5 mils zinc rich durable polyester primer powder coat, followed by a 3 to 5 mils super durable AAMA 2604 polyester powder coat finish. Recommended for applications near the coastline or in demanding environments.

ANODIZED UNDER POWDER

Anodized Under Powder (AUP) poles are dipped in a 3 step process for a clear anodized finish inside and outside of the pole. The final stage is electrostatically applied polyester powder coat with a 3 to 5 mill thickness for maximum adherence.

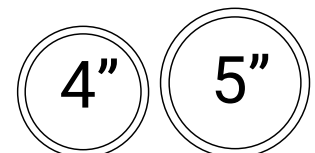
Provides the most protection against the elements in coastal and harsh environments.

VIBRATION DAMPENER

The Vibration Dampener is factory installed and consists of a rugged galvanized chain coated with heavy duty polyester tubing that is factory secured at the bottom 2-3rds of the pole and can optionally be secured in the field by a contractor at the base during installation.

BUY AMERICAN

To ensure the latest BAA/TAA/BABA Standards are being met, please select BAA, TAA, or BABA in the options section. Please contact the factory before placing an order for any NLS products requesting BAA (Buy American Act), TAA (Trade Agreement Act), or BABA (Build America, Buy America).



Project Name:

Type:

RSFP ORDERING GUIDE

Cat#	Height	Pole Dimension	Gauge	Base Pattern
Round Straight Fluted Pole (RSFP)	10' (10)	4" Round (4R)	.188 Wall Thickness (188)	(10'-18') 8 3/16"- 10 3/16" Bolt Circle (9BC)
	12' (12)	5" Round (5R)		(20'-Over) 11 1/2"- 14" Bolt Circle (12BC)
	14' (14)			
	16' (16)			
	18' (18)			
	20' (20)			

Mounting	Color	Bolts	Options
Single (SGL)	Bronze Textured (BRZ)	3/4" x 30" (3430)	GFI Kit (GFI20A) ^{3, 4, 5} <i>20 Amp Weather Proof Receptacle</i>
Double (D-90) (D-180)	White Textured (WHT)	1" x 36" (136)	GFI Provision Only (PROV) ^{4, 5}
Triple (T-90)	Smooth White Gloss (SWT)	Less Anchor Bolts (LAB)	Round Base Cover (RBC) <i>*Consult Factory for Pricing</i>
Quad (QD)	Silver Metallic (SVR)		1/2" Coupling (COUP) ⁴ <i>* Specify Location</i>
No Drill (ND) <i>*Tenon Option</i>	Black Textured (BLK)		Vibration Dampener (VD)
Tenon	Smooth Black Gloss (SBK)		Extra Hand Hole (XHH) ⁴ <i>* Specify Location</i>
2-3/8" Round (T2R)	Graphite Textured (GPH)		Marine Grade Finish (MGF)
3" Round (T3R)	Grey Textured (GRY)		Anodized Under Powder (AUP)
3-1/2" Round (T312R)	Green Textured (GRN)		UL Certified with label (UL) ¹
4-1/2" Round (T412R)	Hunter Green Textured (HGN)		Aluminum Pole Cap (APC) ²
	Custom (CS)		Buy American Act (BAA) ²
			Trade Agreement Act (TAA) ²
			Build America Buy American (BABA) ²

NOTES:

- Aluminum Pole Cap must be selected for UL Certified Pole Option
- Consult Factory
- Standard weatherproof cover comes standard with option.
For lockable cover requests, please contact factory
- Specify the Height (in feet) from ground level and degree orientation from wire access slot.
- 120V Only



701 Kingshill Place, Carson, CA 90746
Call Us Today (310) 341-2037

nlsighting.com

PRODUCT SPECIFICATIONS

Max. allowable EPA - RSFP poles (per AASHTO LRFDLTS-1)

Catalog Number	Shaft Length, ft	Wall thickness, in.	Shaft dia., in.	Base Plate, in.	Bolt Circle, in.	Bolts	80 mph	Max. wt. (lb)	90 mph	Max. wt. (lb)	100 mph	Max. wt. (lb)	110 mph	Max. wt. (lb)	115 mph	Max. wt. (lb)	120 mph	Max. wt. (lb)	130 mph	Max. wt. (lb)	140 mph	Max. wt. (lb)	150 mph	Max. wt. (lb)	160 mph	Max. wt. (lb)	170 mph	Max. wt. (lb)	180 mph	Max. wt. (lb)
RSFP-10-4R-188-9BC-34340	10	0.188	4	9" sq. X 3/4"	9-3/16	3/4"X30"	20.0	500	20.0	500	16.2	405	13.3	333	11.9	298	10.8	270	8.3	208	7.0	175	5.9	148	5.1	128	4.4	110	3.9	98
RSFP-12-4R-188-9BC-34340	12	0.188	4	9" sq. X 3/4"	9-3/16	3/4"X30"	20.0	500	16.4	410	12.8	320	10.0	250	8.5	213	7.6	190	6.1	153	5.0	125	4.1	103	3.5	88	3.0	75	2.6	65
RSFP-12-5R-188-9BC-34340	12	0.188	5	9" sq. X 3/4"	9-3/16	3/4"X30"	20.0	500	20.0	500	20.0	500	17.5	438	16.0	400	14.5	363	11.9	298	10.1	253	8.3	208	6.7	168	5.9	148	5.2	130
RSFP-14-4R-188-9BC-34340	14	0.188	4	9" sq. X 3/4"	9-3/16	3/4"X30"	17.2	430	13.3	333	10.4	260	8.1	203	7.2	180	6.6	165	5.3	133	4.3	108	3.5	88	2.7	68	2.3	60	1.8	60
RSFP-14-5R-188-9BC-34340	14	0.188	5	9" sq. X 3/4"	9-3/16	3/4"X30"	20.0	500	20.0	500	17.7	443	14.3	358	12.7	318	11.6	290	9.5	238	7.7	193	6.5	163	5.4	135	4.5	113	3.6	90
RSFP-15-4R-188-9BC-34340	15	0.188	4	9" sq. X 3/4"	9-3/16	3/4"X30"	15.6	390	12.0	300	9.3	233	7.3	183	6.5	163	5.8	145	4.5	113	3.7	93	2.8	70	2.3	60	1.8	60	1.4	60
RSFP-15-5R-188-9BC-34340	15	0.188	5	9" sq. X 3/4"	9-3/16	3/4"X30"	20.0	500	20.0	500	16.2	405	12.8	320	11.6	290	10.3	258	8.5	213	6.8	170	5.7	143	4.7	118	3.7	93	3.1	78
RSFP-16-4R-188-9BC-34340	16	0.188	4	9" sq. X 3/4"	9-3/16	3/4"X30"	13.4	335	10.1	253	7.8	195	5.9	148	5.2	130	4.6	115	3.8	95	3.4	85	2.5	63	1.7	60	1.2	60	0.7	60
RSFP-16-5R-188-9BC-34340	16	0.188	5	9" sq. X 3/4"	9-3/16	3/4"X30"	20.0	500	17.5	438	13.8	345	10.8	270	9.8	245	8.5	213	7.0	175	5.5	138	4.4	110	3.6	90	3.0	75	2.4	60
RSFP-18-4R-188-9BC-34340	18	0.188	4	9" sq. X 3/4"	9-3/16	3/4"X30"	10.9	273	8.1	203	6.2	155	4.7	118	4.1	103	3.4	85	2.5	63	1.8	60	1.2	60	0.9	-	0.5	-	0.2	-
RSFP-18-5R-188-9BC-34340	18	0.188	5	9" sq. X 3/4"	9-3/16	3/4"X30"	19.4	485	14.6	365	11.2	280	8.7	218	7.7	193	6.8	170	5.3	133	4.1	103	3.3	83	2.4	60	1.9	60	1.2	60
RSFP-20-4R-188-12BC-136	20	0.188	4	12" sq. X 1"	12	1"X36"	9.1	228	6.6	165	4.7	118	3.5	88	2.8	70	2.5	63	1.7	60	1.1	-	0.6	-	0.2	-	-	-	-	
RSFP-20-5R-188-12BC-136	20	0.188	5	12" sq. X 1"	12	1"X36"	16.5	413	12.3	308	9.4	235	7.1	178	6.0	150	5.4	135	3.9	98	3.1	78	2.1	60	1.4	60	1.0	60	0.5	60

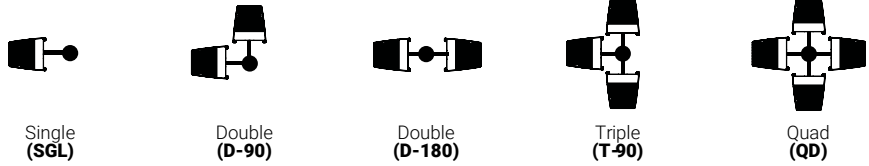
*Pole Assemblies With EPA>9.0 Require Specific Review

CAUTION: Installation of poles without luminaire(s) will compromise pole strength. Any accessories attached to the pole, or other modifications done in the field, will compromise the pole strength and may result in pole failure. Wind load evaluations and provisions for appendages such as banner arms, signage, cameras, etc., must be evaluated and approved by the factory prior to placing an order. Additional evaluation and approval should be performed by the customer's local structural engineer on the project.

***Anchor Bolts are NOT included with Custom Bolt Circle.
*Do NOT pour concrete referencing this drawing. Consult Factory.**

***All wind loading calculations are based on sustained wind force plus an additional 1.3 gust.**

MOUNTING CONFIGURATION



BUY AMERICAN OPTION

While all of the NLS Lighting products listed in this document qualify for the Buy America(n) Act of 1933, we reserve the right to change our listings without notice.

The information provided above is for general informational purposes only. We encourage you to consult legal professionals for advice particular to your projects concerning BAA, TAA, BABA or Buy America.

Additional NLS Products that meet BAA, TAA standards can be found at the following link:

<https://nslighting.com/buy-american/>



701 Kingshill Place, Carson, CA 90746
Call Us Today (310) 341-2037

nslighting.com

PRODUCT SPECIFICATIONS

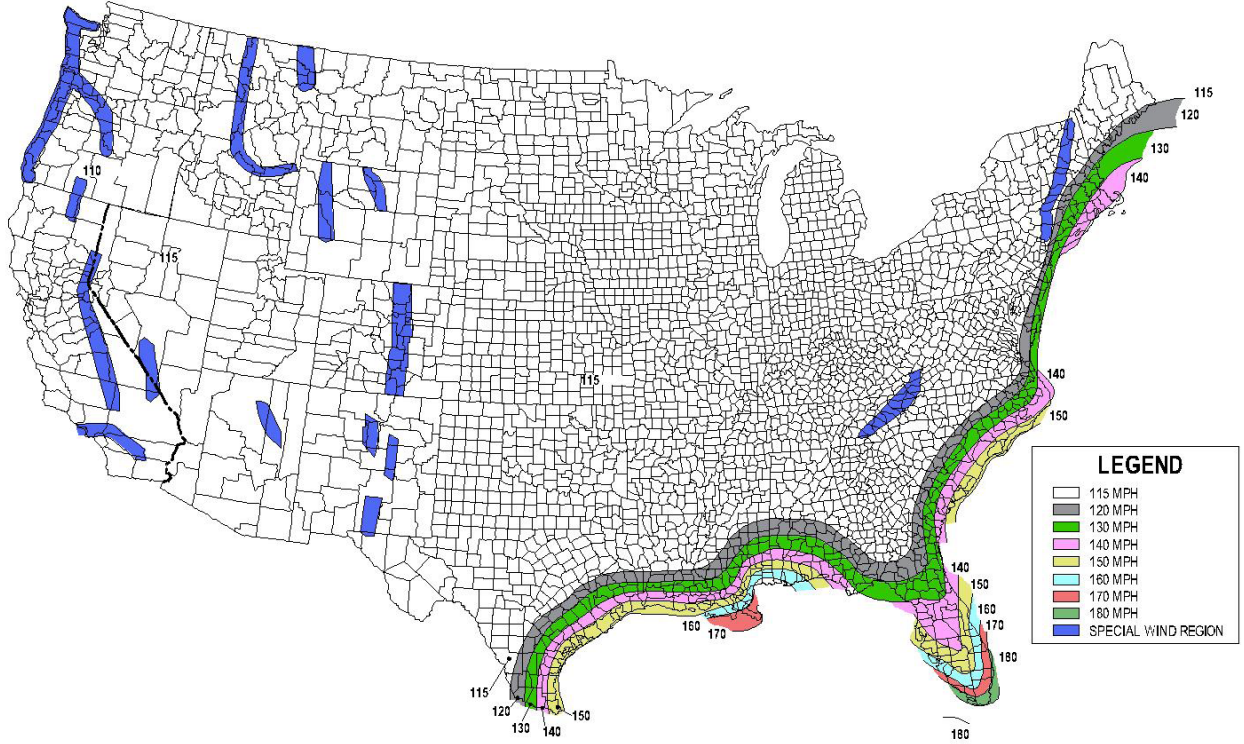
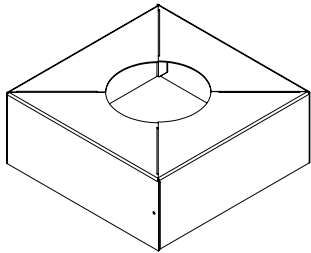
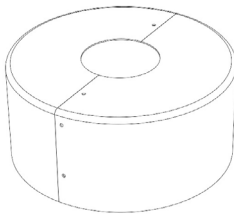


FIG. 3.8-1b - 700-Year MRI Basic Wind Speed, mph (AASHTO LRFDLTS-1)

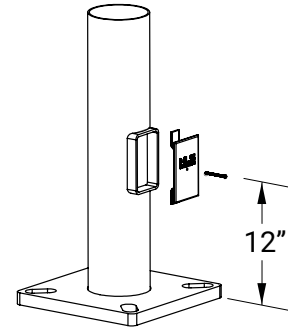
- 1) All wind load calculations are based on sustained wind force plus an additional 1.3 gust
- 2) Wind Map is to be used as a reference only. Please coordinate with local agencies for further review.
- 3) Wind Map values are based on a 50 year mean recurrence. These values do not account for severe conditions, such as hurricanes, tornadoes, etc...
- 4) For review of poles with additional configurations (arms, banners, shorter/longer pole lengths, etc...), please contact factory.



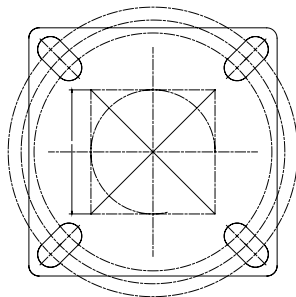
BASE COVER



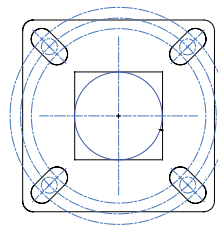
**OPTIONAL ROUND
BASE COVER**



BASE DETAIL



12" BASE DETAIL



9" BASE DETAIL