

QUICKSHIPFLASH

72-HR MADE TO ORDER QUICK SHIP PROGRAM

How To Order?

1. Choose from Selections—

- A Mounting
- B Finish
- C Optional Adders

2. Submit Order

3. Order ships in 72 HRS!

72HR
TURNAROUND



POLES

FLX-SSSP



FLX-SSSP-15'-4S-11G-9BC-(A)-(B)-(C)

FLX-SSSP-18'-4S-11G-9BC-(A)-(B)-(C)

FLX-SSSP-20'-4S-11G-9BC-(A)-(B)-(C)

FLX-SSSP-25'-4S-11G-12BC-(A)-(B)-(C)

CONSULT FACTORY FOR PRICING

ANCHOR BOLTS ARE NOT INCLUDED WITH POLES

Quantity 25 or less per order.
For additional quantity breaks, or custom finishes,
please Contact Factory.

FREIGHT ALLOWED: \$3,000 USD

(*) Selections Available to Configure

A MOUNTINGS AVAILABLE:

- No Drill (ND)
- Single (SGL)
- Double 90 (D90)
- Double 180 (D180)

B FINISHES AVAILABLE:

- Bronze Textured (BRZ)
- Black Textured (BLK)

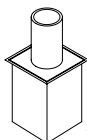
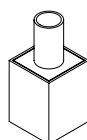
C (OPTIONAL) ADDERS AVAILABLE:

- Anchor Bolt Set 3/4"x30" (3430)
- Anchor Bolt Set 1"x36" (136)
- Slip Over Tenon Adaptor:
In Bronze (FLX-SOAS-4S-BRZ)
In Black (FLX-SOAS-4S-BLK)
- Slip Into Tenon Adaptor:
In Bronze (FLX-SIAS-4S-BRZ)
In Black (FLX-SIAS-4S-BLK)

OPTIONAL ADDERS

SLIP OVER 4" SQ ADAPTOR
WITH 2-3/8" OD TENON
(FLX-SOAS-4S-BRZ)
(FLX-SOAS-4S-BLK)

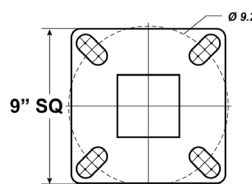
SLIP IN 4" SQ ADAPTOR
WITH 2-3/8" OD TENON
(FLX-SIAS-4S-BRZ)
(FLX-SIAS-4S-BLK)



ANCHOR BOLT SET OF 4:
3/4"x30" *For 20' & Below
(3430)
1"x36" *For 21' & Over
(136)

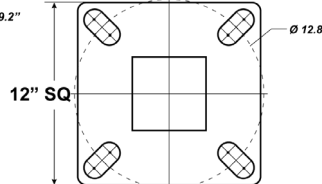


BOLT CIRCLE / BASE PLATES / BASE COVERS



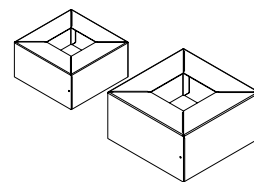
9" SQ BASE PLATE

For Poles 20' & Under
uses Bolt Circle 9" 3/16



12" SQ BASE PLATE

For Poles 21' & Over
uses Bolt Circle 12" 3/4



STANDARD SQ BASE COVER

9"SQ for Poles 20' & Below
12"SQ for Poles 21' & Over

*Anchor Bolts are NOT included with Custom Bolt Circle.
*Do NOT pour concrete referencing this drawing. Consult Factory.
*Must Specify 4-Bolt Pattern.

*All wind loading calculations are based on sustained wind
force plus an additional 1.3 gust.

*Included with Poles

SPECIFY POLE SIZE FOR ALL OPTIONS

NLS
LIGHTING
nlsighting.com

REV. 08.29.25