



**QUICKSHIPFLASH**  
THE MOST FLEXIBLE QUICK SHIP PROGRAM



**Height**

15', 18', 20', 25'

**Pole Shaft**

The pole shaft material is a weldable grade hot rolled commercial quality carbon steel tubing with a minimum yield of 46,000 psi. Conforms to ASTM A500 Grade B Standards. Poles have ground lug welded inside hand-hole opposite side of the hand-hole. Pole shaft is welded to base plate on top and bottom of base plate.

**Base Plate**

The Base Plate is manufactured from structural hot rolled steel that meets or exceeds a minimum yield strength of 36,000 psi, conforms the ASTM-A36 standards. Base Plate vary in size from 1" thick for poles 21 feet and over, 3/4" thick for poles 10 to 20 feet.

**Anchor Bolts**

All anchor bolts are hot dipped galvanized steel and come with two galvanized nuts and washers per bolt. Minimum yield strength 50,000 psi. Anchor bolts are not included for Custom Bolt Circle.

**Hand-Hole**

A reinforced hand-hole is 12" on center from the base plate and is constructed of 3"x 5" rectangular steel tubing which is welded to pole shaft for added strength. The hand-hole covers are provided with internal bridge support and powder coated to match pole finish.

**Pole Cap**

All poles come with a removable polymer pole cap installed. All pole caps are black finish.

**Finish**

All poles are treated with shot blast media for a near white finish, power blasted with 100 psi prior to powder coat application. Electrostatically applied polyester powder coat with a 3 to 5 mil thickness for maximum adherence.

Project Name:

Type:

## FLX-SSSP ORDERING GUIDE

Cat#

Height

Pole Dimension

Gauge

Base Pattern

Square  
Straight  
Steel Pole  
(FLX-SSSP)

15' (15)  
18' (18)  
20' (20)  
25' (25)

4" Square  
(4S)

.120  
Wall Thickness  
(11G)

(15'-20')  
9"- 10 3/8"  
Bolt Circle  
(9BC)

(25')  
11 1/2"- 14"  
Bolt Circle  
(12BC)

Mounting

Color

Bolts

Single  
(SGL)

Bronze Textured  
(BRZ)

3/4" x 30"  
(3430)

Double  
(D-90)  
(D-180)

1" x 36"  
(136)

No Drill  
(ND)

Less Anchor  
Bolts  
(LAB)

**NLS**  
LIGHTING

701 Kingshill Place, Carson, CA 90746  
Call Us Today (310) 341-2037

**QUICKSHIPFLASH**  
THE MOST FLEXIBLE QUICK SHIP PROGRAM

nslighting.com

FLX-SSSP EPA DATA								
Maximum EPA (ft) Allowable								
POLE HEIGHT	POLE DIA.	WALL	BASE PLATE	BOLT CIRCLE SIZE	BOLTS	80 Mph	90 Mph	100 Mph
15'	4" SQ	.180	9" Sq. x 3/4"	9 3/4"	3/4" x 30"	18.2	12.2	10.4
18'	4" SQ	.120	9" Sq. x 3/4"	9 3/4"	3/4" x 30"	9.8	7.2	5.4
20'	4" SQ	.120	9" Sq. x 3/4"	9 3/16"	3/4" x 30"	8.2	5.5	4.0
20'	4" SQ	.180	9" Sq. x 3/4"	9 3/4"	3/4" x 30"	14.5	10.0	7.6
20'	5" SQ	.180	12" Sq. x 1"	12 3/4"	1"x 36"	26.2	21.2	15.4
25'	4" SQ	.120	12" Sq. x 1"	12 3/4"	1"x 36"	4.7	2.5	1.2
25'	4" SQ	.180	12" Sq. x 1"	12 3/4"	1"x 36"	10.9	7.4	5.2
25'	5" SQ	.120	12" Sq. x 1"	12 3/4"	1"x 36"	10.2	6.6	1.6
25'	5" SQ	.180	12" Sq. x 1"	12 3/4"	1"x 36"	18.9	13.2	9.6

*\*Anchor Bolts are NOT included with Custom Bolt Circle.  
\*Do NOT pour concrete referencing this drawing. Consult Factory.*

*\*All wind loading calculations are based on sustained wind force plus an additional 1.3 gust.*

## MOUNTING CONFIGURATION



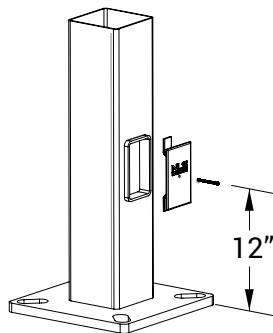
Single  
(SGL)



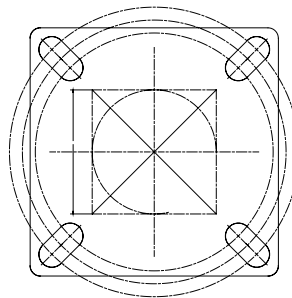
Double  
(D-90)



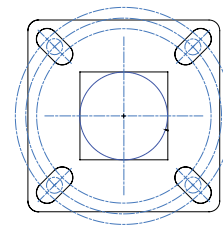
Double  
(D-180)



Base Detail



12" Base Detail



9" Base Detail