

QUICKSHIPFLASH
72-HR MADE TO ORDER QUICK SHIP PROGRAM

72HR
TURNAROUND



QUICKSHIPFLASH
72-HR MADE TO ORDER QUICK SHIP PROGRAM



LED WATTAGE CHART

	16L	32L
400 milliamps	21W	-
530 milliamps	28W	54W
700 milliamps	36W	71W
1000 milliamps	-	101W
1050 milliamps	56W	-

FORM AND FUNCTION

- Sleek, low profile housing
- Spec grade performance
- Engineered for optimum thermal management
- L70 480,000
- Reduces energy consumption and costs up to 65%

CONSTRUCTION

- Die Cast Aluminum
- External cooling fins
- Corrosion resistant external hardware
- One-piece silicone gasket ensures IP65 seal for electronics compartment
- One-piece Optics Plate™ mounting silicone Micro Optics
- Two-piece silicone Micro Optic system ensures IP67 level seal around each PCB
- Silicone Micro Optics: Recessed, full cutoff, vandal resistant and non-yellowing
- Dark Sky Compliant

FINISH

- 3-5 mils electrostatic powder coat.
- NLS' standard high-quality finishes prevent corrosion, protects against extreme environmental conditions

WARRANTY

Five-year limited warranty for drivers and LEDs.

LISTINGS

- Certified to UL 1598
- UL 8750
- CSA C22.2 No. 250.0
- DesignLights Consortium® (DLC)
- DesignLights Consortium Premium® (DLCP)
- IP65/ IP67 Rated
- 3G Vibration Rated per ANSI C136.31-2010

Project Name:

Type:

FLX-NV-W ORDERING GUIDE

Cat#	Light Dist.	# of LEDs	Drive Current	Kelvin	Volts	
Ship Flex NV-W (FLX-NV-W)	Standard Silicone Micro Optics		Standard Configurations			
	Type 2 (T2)	16 LED (16L)	400 mA (40)	3000K, 70CRI (30K) ¹	120-277 (UNV)	
	Type 3 (T3)		530 mA (53)	4000K, 70CRI (40K)	347-480 (HV)	
	Type 4 (T4)		700 mA (7)	5000K, 70CRI (50K)		
			1050 mA (1)			
		32 LED (32L)	530 mA (53)			
			700 mA (7)			
			1050 mA (1)			
		Performance Silicone Micro Optics		Standard Configurations		
	Type 4 Forward Throw Wide (T4FTW)	16 LED (16L)	700 mA (7)			
		32 LED (32L)	1000 mA (1A)			
		Performance Plus Configurations				
	16 LED (16L)	400 mA (40)				
		530mA (53)				
	32 LED (32L)	530 mA (53)				

* Performance Plus configurations with our New Performance Silicone Optics. (For the ultimate performance of the New Performance Silicone Optics combine highest chip count with High Efficacy Drive Currents)

Mounting	Color	Controls Options	Options
Wall Mount (WM)	Bronze Textured (BRZ)	Nema 7-Pin Receptacle (PE7)	Housing Side Shield (HSS)
	Black Textured (BLK)	Photocell + Receptacle (PCR)	
		Receptacle + Shorting Cap (PER)	
		FSP-211 with Motion Sensor/Photocell 9'-20' Heights (FSP211-20) ²	
		21'-40' Heights (FSP211-40) ²	
		FSP211 Remote (FSIR)	

NOTES:

- 3000K or lower must be selected to meet International Dark Sky Association certification
- FSP-211, 120V/277VAC (800W/1200W Max), 230-240VAC (300W Max), 50/60Hz Single Phase. Field/Site line voltage must be disclosed for project validation.



701 Kingshill Place, Carson, CA 90746
Call Us Today (310) 341-2037

QUICKSHIPFLASH
72-HR MADE TO ORDER QUICK SHIP PROGRAM

nlsighting.com

PRODUCT SPECIFICATIONS

ELECTRICAL

- 120-277 Volts (UNV) or 347-480 Volts (HV)
- 0-10V dimming driver
- Driver power factor at maximum load is $\geq .95$, THD maximum load is 15%
- All internal wiring UL certified for 600 VAC and 105°C
- All drivers, controls, and sensors housed in enclosed IP65 compartment
- CRI >70
- Color temperatures: 3000K, 4000K, 5000K

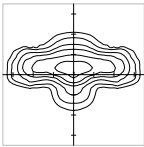
CONTROL OPTIONS

- DIMMING CONTROL (DCX)—Passive infrared (PIR) sensor providing multi-level control based on motion/daylight contribution.
 - All control parameters adjustable via wireless configuration remote storing and transmitting sensor profiles.
 - DC8 mounting heights 8 feet and below
 - DC20 mounting heights 9-20 feet
 - DC40 mounting heights 21-40 feet.
 - Includes 5 dimming event cycles, 0-10V dimming with motion sensing, reprogrammable in the field.
- NEMA 7-PIN RECEPTACLE (PE7)—An ANSI C136.41-2013 receptacle provides electrical and mechanical interconnection between photo control cell and luminaire. Dimming receptacle available two or four dimming contacts supports 0-10 VDC dimming methods or Digital Addressable Lighting Interface (DALI), providing reliable power interconnect

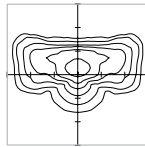
OPTICS

Silicone optics high thermal stability and light output provide higher powered LEDs with minimized lumen depreciation. UV stability with scratch resistance increases exterior application durability. Silicone optics do not yellow, crack or brittle over time

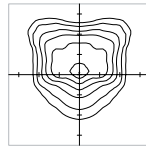
- IES Types:



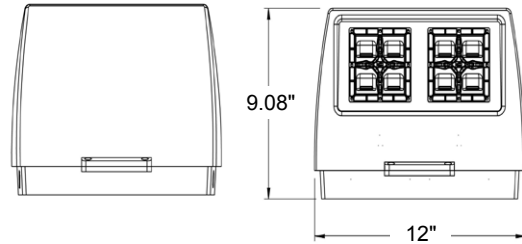
TYPE II (T2)



TYPE III (T3)

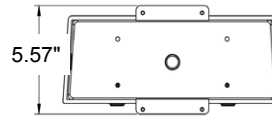


TYPE IV (T4)

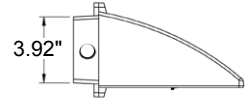


TOP VIEW

BOTTOM VIEW



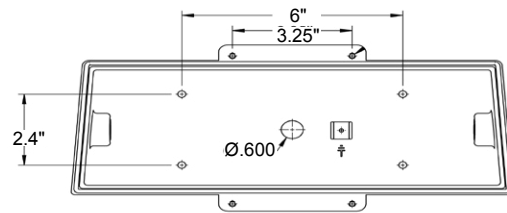
5.57"



3.92"

WEIGHT: 7.2 LBS

MOUNTING HOLE



* 3 Conduit access points on either side or center back.

MOTION SENSOR PLACEMENT



The information and specifications on this document are subject to change without any notification. All values are design, nominal, typical or prorated values when measured under internal and external laboratory conditions.



701 Kingshill Place, Carson, CA 90746
Call Us Today (310) 341-2037



nlsighting.com

PRODUCT SPECIFICATIONS

LUMEN CHARTS

STANDARD SILICONE MICRO OPTICS - NON-SHIELDED - 16 LED

PART NUMBER	T2	LPW	T3	LPW	T4	LPW	Wattage
NV-W-16L-40-30K7	2469	118	2801	133	2769	132	21
NV-W-16L-40-40K7	2992	142	3027	144	2992	142	21
NV-W-16L-40-50K7	2992	142	3027	144	2992	142	21
NV-W-16L-53-30K7	3544	127	3579	128	3544	127	28
NV-W-16L-53-40K7	3756	134	3794	136	3756	134	28
NV-W-16L-53-50K7	3756	134	3794	136	3756	134	28
NV-W-16L-7-30K7	4388	122	4432	123	4388	122	36
NV-W-16L-7-40K7	4651	129	4698	131	4651	129	36
NV-W-16L-7-50K7	4651	129	4698	131	4651	129	36
NV-W-16L-1-30K7	5970	107	6029	108	5970	107	56
NV-W-16L-1-40K7	6328	113	6391	114	6328	113	56
NV-W-16L-1-50K7	6328	113	6391	114	6328	113	56

STANDARD SILICONE MICRO OPTICS - NON-SHIELDED - 32 LED

PART NUMBER	T2	LPW	T3	LPW	T4	LPW	Wattage
NV-W-32L-7-30K7	9010	127	9100	128	9010	127	71
NV-W-32L-7-40K7	9550	135	9646	136	9550	135	71
NV-W-32L-7-50K7	9550	135	9646	136	9550	135	71
NV-W-32L-1A-30K7	10871	109	10983	110	10871	109	100
NV-W-32L-1A-40K7	11426	114	11544	115	11426	114	100
NV-W-32L-1A-50K7	11426	114	11544	115	11426	114	100

PERFORMANCE SILICONE MICRO OPTICS - NON-SHIELDED - 16 LED

PART NUMBER	T4FTW	LPW	Wattage
NV-W-16L-40-30K7	2437	116	21
NV-W-16L-40-40K7	2499	119	21
NV-W-16L-40-50K7	2499	119	21
NV-W-16L-53-27K7	2587	92	28
NV-W-16L-53-30K7	3003	107	28
NV-W-16L-53-40K7	3080	110	28
NV-W-16L-53-50K7	3080	110	28
NV-W-16L-7-27K7	3054	85	36
NV-W-16L-7-30K7	3545	98	36
NV-W-16L-7-40K7	3636	101	36
NV-W-16L-7-50K7	3636	101	36
NV-W-16L-1-27K7	4668	83	56
NV-W-16L-1-30K7	5418	96	56
NV-W-16L-1-40K7	5557	99	56
NV-W-16L-1-50K7	5557	99	56

PERFORMANCE SILICONE MICRO OPTICS - NON-SHIELDED - 32 LED

PART NUMBER	T4FTW	LPW	Wattage
NV-W-32L-53-30K7	6318	117	54
NV-W-32L-53-40K7	6480	120	54
NV-W-32L-53-50K7	6480	120	54
NV-W-32L-7-30K7	7684	108	71
NV-W-32L-7-40K7	7881	111	71
NV-W-32L-7-50K7	7881	111	71
NV-W-32L-1A-30K7	10709	106	101
NV-W-32L-1A-40K7	10984	109	101
NV-W-32L-1A-50K7	10984	109	101

L70 DATA

TEMP	NV-W
	L70 (16L-1050mA)
60.2°C	483,000

L70 DATA

TEMP	NV-W
	L70 (32L-700mA)
63°C	483,000



701 Kingshill Place, Carson, CA 90746
Call Us Today (310) 341-2037



nlsighting.com

PRODUCT SPECIFICATIONS

BUG RATING CHARTS

STANDARD SILICONE MICRO OPTICS - NON-SHIELDED - 16 LED

PART NUMBER	T2	T3	T4
NV-W-16L-40-30K7	B1-U0-G1	B1-U0-G1	B1-U0-G1
NV-W-16L-40-40K7	B1-U0-G1	B1-U0-G1	B1-U0-G1
NV-W-16L-40-50K7	B1-U0-G1	B1-U0-G1	B1-U0-G1
NV-W-16L-53-30K7	B1-U0-G1	B1-U0-G1	B1-U0-G1
NV-W-16L-53-40K7	B1-U0-G1	B1-U0-G1	B1-U0-G1
NV-W-16L-53-50K7	B1-U0-G1	B1-U0-G1	B1-U0-G1
NV-W-16L-7-30K7	B1-U0-G1	B1-U0-G1	B1-U0-G1
NV-W-16L-7-40K7	B1-U0-G1	B1-U0-G1	B1-U0-G1
NV-W-16L-7-50K7	B1-U0-G1	B1-U0-G1	B1-U0-G1
NV-W-16L-1-30K7	B1-U0-G1	B1-U0-G2	B1-U0-G2
NV-W-16L-1-40K7	B1-U0-G1	B1-U0-G2	B1-U0-G2
NV-W-16L-1-50K7	B1-U0-G1	B1-U0-G2	B1-U0-G2

STANDARD SILICONE MICRO OPTICS - NON-SHIELDED - 32 LED

PART NUMBER	T2	T3	T4
NV-W-32L-7-30K7	B1-U0-G2	B2-U0-G2	B2-U0-G2
NV-W-32L-7-40K7	B1-U0-G2	B2-U0-G2	B2-U0-G2
NV-W-32L-7-50K7	B1-U0-G2	B2-U0-G2	B2-U0-G2
NV-W-32L-1A-30K7	B2-U0-G2	B2-U0-G2	B2-U0-G2
NV-W-32L-1A-40K7	B2-U0-G2	B2-U0-G2	B2-U0-G2
NV-W-32L-1A-50K7	B2-U0-G2	B2-U0-G2	B2-U0-G2

PERFORMANCE SILICONE MICRO OPTICS - NON-SHIELDED - 16 LED

PART NUMBER	T4FTW
NV-W-16L-40-30K7	B1-U0-G2
NV-W-16L-40-40K7	B1-U0-G2
NV-W-16L-40-50K7	B1-U0-G2
NV-W-16L-53-30K7	B1-U0-G2
NV-W-16L-53-40K7	B1-U0-G2
NV-W-16L-53-50K7	B1-U0-G2
NV-W-16L-7-30K7	B1-U0-G3
NV-W-16L-7-40K7	B1-U0-G3
NV-W-16L-7-50K7	B1-U0-G3
NV-W-16L-1-30K7	B1-U0-G3
NV-W-16L-1-40K7	B1-U0-G3
NV-W-16L-1-50K7	B1-U0-G3

PERFORMANCE SILICONE MICRO OPTICS - NON-SHIELDED - 32 LED

PART NUMBER	T4FTW
NV-W-32L-35-30K7	B1-U0-G2
NV-W-32L-35-40K7	B1-U0-G2
NV-W-32L-35-50K7	B1-U0-G2
NV-W-32L-53-30K7	B1-U0-G2
NV-W-32L-53-40K7	B1-U0-G2
NV-W-32L-53-50K7	B1-U0-G2
NV-W-32L-7-30K7	B1-U0-G2
NV-W-32L-7-40K7	B2-U0-G2
NV-W-32L-7-50K7	B2-U0-G2
NV-W-32L-1A-30K7	B2-U0-G2
NV-W-32L-1A-40K7	B2-U0-G2
NV-W-32L-1A-50K7	B2-U0-G2