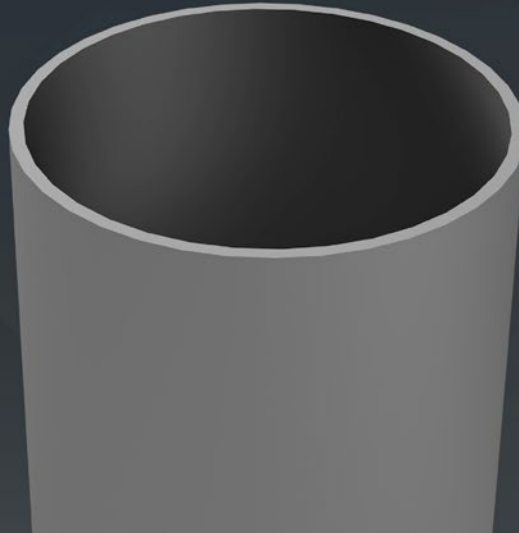


DIRECT BURIAL ROUND STRAIGHT STEEL POLE



HEIGHT ABOVE GRADE

10' - 24'

POLE SHAFT

The pole shaft material is a weldable grade hot rolled commercial quality steel tubing with a minimum yield of 46,000 psi. Conforms to ASTM A500 Grade B Standards. Poles have ground lug welded inside hand-hole opposite side of the hand-hole.

Direct Burial poles can be ordered with optional coupling (specify height), optional hand hole (specify height), or optional Slot for conduit ingress and egress (specify height). When poles are ordered with a three-way combination of Coupling, Hand Hole and Ground Lug, then the Ground Lug is positioned at 90 degrees to the Hand Hole and the Coupling is opposite the Hand Hole. When the pole is ordered with Hand Hole only, the Ground Lug is at 180 to the Hand Hole.

POLE CAP

All poles come with a removable polymer pole cap installed. All pole caps are black finish. Aluminum Pole Cap option is painted to match pole.

FINISH

All poles are treated with shot blast media for a near white finish, power blasted with 100 psi prior to powder coat application. Electrostatically applied AAMA 2604 polyester powder coat with a 3 to 5 mil thickness for maximum adherence.

MARINE GRADE FINISH

All poles are washed through a 5-stage cleaning system with a deionized rinse, a 3 to 5 mils zinc rich durable polyester primer powder coat, followed by a 3 to 5 mils super durable AAMA 2604 polyester powder coat finish.

Recommended for applications near the coastline or in demanding environments.

GALVANIZED FINISH

All poles are Hot Dipped Galvanized in a multi stage process. Galvanizing Specification, Zinc (Hot Dipped Galvanized) per ASTM A 123/A 123M – 02

Zinc coatings on threaded materials shall conform to specification A 153 /A 153M. The coating shall be continuous and reasonably smooth and uniform in thickness and in weight.

Galvanizing Adherence - The Zinc coating shall withstand handling consistent with the nature and thickness of the coating and normal use of the article without peeling or flaking.

Provides the most protection against the elements in coastal and harsh environments.

GALVANIZED UNDER POWDER

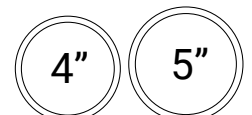
Galvanized Under Powder (GUP) adheres to above galvanized specification, and the second stage is a light sand blast on the outside of the pole, third stage is a 3-5 mils AAMA 2604 polyester powder coat finish for maximum adherence.

VIBRATION DAMPENER

The Vibration Dampener is factory installed and consists of a rugged galvanized chain coated with heavy duty polyester tubing that is factory secured at the bottom 2-3rds of the pole and can optionally be secured in the field by a contractor at the base during installation.

BUY AMERICAN

To ensure the latest BAA/TAA/BABA Standards are being met, please select BAA, TAA, or BABA in the options section. Please contact the factory before placing an order for any NLS products requesting BAA (Buy American Act), TAA (Trade American Act), or BABA (Build America, Buy America).



Project Name:

Type:

DBRSSP ORDERING GUIDE

Cat#	Height Above Grade	Pole Dimension	Gauge	Mounting
Direct Burial	10' (10)	4" Round	.120	Single
Round Straight	12' (12)	(4R)	Wall Thickness	(SGL)
Steel Pole	14' (14)	5" Round	(11G)	Double
(DBRSSP)	16' (16)	(5R)	.180	(D-90)
	18' (18)		Wall Thickness	(D-180)
	20' (20)		(7G)	Triple
	22' (22)		.250	(T-90)
	24' (24)		Wall Thickness	(T-120)
			(250)	Quad
				(QD)
				No Drill
				(ND)
				<i>*Tenon Option</i>
				Tenon
				2 3/8" Round (T2R)
				3" Round (T3R)
				3 1/2" Round (T312R)
				4 1/2" Round (T412R)
Color	Options	Options		
Bronze Textured	GFI Kit	Hand Hole		
(BRZ)	(GFI20A)ⓈⓉ	(HH)Ⓢ		
White Textured	20 Amp	<i>*Specify Location</i>		
(WHT)	Weather Proof Receptacle	Slot		
Smooth White	GFI	(S)		
Gloss	Provision Only	Marine Grade Finish		
(SWT)	(PROV)Ⓢ	(MGF)		
Silver	Galvanized	Square Base Cover		
(SVR)	(GLV)	(SBC)		
Green Textured	Galvanized	Round Base Cover		
(GRN)	Under Powder	(RBC)		
Hunter Green Textured	(GUP)	<i>*Consult Factory for Pricing</i>		
(HGN)	1/2" Coupling	UL Certified with label		
Black Textured	(COUP)Ⓢ	(UL)Ⓢ		
(BLK)	<i>*Specify Location</i>	Aluminum Pole Cap		
Smooth Black	Vibration Dampener	(APC)Ⓢ		
Gloss	(VD)	Buy American Act		
(SBK)		(BAA)Ⓢ		
Graphite Textured		Trade Agreement Act		
(GPH)		(TAA)Ⓢ		
Grey Textured		Build America Buy American		
(GRY)		(BABA)Ⓢ		
Custom				
(CS)				

Notes:

- Ⓢ Aluminum Pole Cap must be selected for UL Certified Pole Option
- Ⓣ Consult Factory
- Ⓢ Standard weatherproof cover comes standard with option. For lockable cover requests, please contact factory
- Ⓢ Specify the Height (in feet) from base and degree orientation from wire access slot



701 Kingshill Place, Carson, CA 90746
 Call Us Today (310) 341-2037

nslighting.com

PRODUCT SPECIFICATIONS

Max. allowable EPA - DBRSSP poles (per AASHTO LRFDLTS-1)																													
Catalog Number	Above Grade Shaft Length, ft	Total Shaft Length, ft	Em-bed-ment Depth, ft	Wall thick-ness, in.2	Shaft dia., in.	80 mph	Max. wt. (lb)	90 mph	Max. wt. (lb)	100 mph	Max. wt. (lb)	110 mph	Max. wt. (lb)	115 mph	Max. wt., lb	120 mph	Max. wt., lb	130 mph	Max. wt., lb	140 mph	Max. wt., lb	150 mph	Max. wt., lb	160 mph	Max. wt., lb	170 mph	Max. wt., lb	180 mph	Max. wt., lb
DBRSSP-10-4R-11G	10	14	4	0.125	4	20.0	500	20.0	500	20.0	500	20.0	500	19.3	483	17.5	438	14.7	368	12.1	303	10.3	258	9.3	233	8.1	203	6.9	173
DBRSSP-10-4R-7G	10	14	4	0.188	4	20.0	500	20.0	500	20.0	500	20.0	500	20.0	500	20.0	500	20.0	500	18.6	465	16.0	400	14.2	355	12.6	315	11.2	280
DBRSSP-10-5R-11G	10	14	4	0.125	5	20.0	500	20.0	500	20.0	500	20.0	500	20.0	500	20.0	500	20.0	500	20.0	500	18.0	450	15.4	385	13.6	340	12.0	300
DBRSSP-10-5R-7G	10	14	4	0.188	5	20.0	500	20.0	500	20.0	500	20.0	500	20.0	500	20.0	500	20.0	500	20.0	500	20.0	500	20.0	500	20.0	500	18.4	460
DBRSSP-12-4R-11G	12	16	4	0.125	4	20.0	500	20.0	500	20.0	500	17.0	425	15.0	375	13.6	340	11.2	280	9.6	240	7.8	195	6.8	170	6.2	155	5.2	130
DBRSSP-12-4R-7G	12	16	4	0.188	4	20.0	500	20.0	500	20.0	500	20.0	500	20.0	500	20.0	500	17.5	438	14.7	368	12.9	323	10.9	273	9.9	248	8.5	213
DBRSSP-12-5R-11G	12	16	4	0.125	5	20.0	500	20.0	500	20.0	500	20.0	500	20.0	500	20.0	500	19.3	483	16.5	413	14.3	358	12.5	313	10.7	268	9.5	238
DBRSSP-12-5R-7G	12	16	4	0.188	5	20.0	500	20.0	500	20.0	500	20.0	500	20.0	500	20.0	500	20.0	500	20.0	500	20.0	500	18.9	473	16.7	418	15.1	378
DBRSSP-14-4R-11G	14	18	4	0.125	4	20.0	500	20.0	500	17.3	433	13.5	338	12.1	303	10.9	273	8.8	220	7.2	180	6.0	150	5.4	135	4.4	110	3.8	95
DBRSSP-14-4R-7G	14	18	4	0.188	4	20.0	500	20.0	500	20.0	500	20.0	500	19.0	475	17.2	430	14.2	355	11.8	295	10.0	250	9.0	225	7.6	190	6.6	165
DBRSSP-14-5R-11G	14	18	4	0.125	5	20.0	500	20.0	500	20.0	500	20.0	500	20.0	500	18.4	460	15.4	385	13.2	330	11.6	290	9.8	245	8.6	215	7.6	190
DBRSSP-14-5R-7G	14	18	4	0.188	5	20.0	500	20.0	500	20.0	500	20.0	500	20.0	500	20.0	500	20.0	500	20.0	500	18.2	455	15.6	390	14.0	350	12.4	310
DBRSSP-16-4R-11G	16	20	4	0.125	4	20.0	500	17.2	430	13.4	335	10.6	265	9.4	235	8.4	210	6.4	160	5.4	135	4.4	110	3.8	95	3.0	75	2.8	70
DBRSSP-16-4R-7G	16	20	4	0.188	4	20.0	500	20.0	500	20.0	500	16.4	410	14.8	370	13.6	340	10.8	270	9.2	230	7.4	185	6.4	160	5.8	145	4.8	120
DBRSSP-16-4R-250	16	20	4	0.250	4	20.0	500	20.0	500	20.0	500	20.0	500	20.0	500	18.0	450	15.2	380	12.4	310	10.8	270	9.4	235	8.2	205	7.2	180
DBRSSP-16-5R-11G	16	20	4	0.125	5	20.0	500	20.0	500	20.0	500	17.6	440	15.8	395	14.4	360	11.8	295	10.0	250	8.8	220	7.4	185	6.4	160	5.6	140
DBRSSP-16-5R-7G	16	20	4	0.188	5	20.0	500	20.0	500	20.0	500	20.0	500	20.0	500	20.0	500	19.2	480	16.4	410	14.2	355	12.4	310	10.6	265	9.6	240
DBRSSP-16-5R-250	16	20	4	0.250	5	20.0	500	20.0	500	20.0	500	20.0	500	20.0	500	20.0	500	20.0	500	20.0	500	19.2	480	16.8	420	14.8	370	12.8	320
DBRSSP-18-4R-11G	18	22	4	0.125	4	19.0	475	14.2	355	10.8	270	8.6	215	7.6	190	6.4	160	5.2	130	4.0	100	2.8	70	2.6	65	2.2	60	1.6	60
DBRSSP-18-4R-7G	18	22	4	0.188	4	20.0	500	20.0	500	17.4	435	13.8	345	12.6	315	11.0	275	8.8	220	7.4	185	5.8	145	5.2	130	4.2	105	3.6	90
DBRSSP-18-4R-250	18	22	4	0.250	4	20.0	500	20.0	500	20.0	500	18.8	470	17.2	430	15.2	380	12.4	310	10.2	255	8.8	220	7.6	190	6.6	165	5.8	145
DBRSSP-18-5R-11G	18	22	4	0.125	5	20.0	500	20.0	500	18.4	460	14.4	360	12.8	320	11.8	295	9.6	240	8.0	200	6.8	170	6.2	155	5.4	135	4.4	110
DBRSSP-18-5R-7G	18	22	4	0.188	5	20.0	500	20.0	500	20.0	500	20.0	500	20.0	500	19.2	480	16.2	405	13.8	345	11.6	290	10.0	250	8.8	220	8.0	200
DBRSSP-18-5R-250	18	22	4	0.250	5	20.0	500	20.0	500	20.0	500	20.0	500	20.0	500	20.0	500	20.0	500	18.6	465	16.0	400	14.2	360	12.2	305	10.8	270
DBRSSP-20-4R-11G	20	25	5	0.125	4	16.2	405	12.2	305	8.8	220	6.6	165	6.0	150	4.8	120	3.8	95	2.4	60	2.0	60	1.6	90	1.0	60	0.8	60
DBRSSP-20-4R-7G	20	25	5	0.188	4	20.0	500	19.6	490	14.8	370	11.8	295	10.2	255	9.0	225	7.0	175	5.8	145	4.4	110	3.6	145	3.4	85	2.6	65
DBRSSP-20-4R-250	20	25	5	0.250	4	20.0	500	20.0	500	20.0	500	16.0	400	14.6	365	12.8	320	10.6	265	8.6	215	6.8	170	5.8	120	5	125	4.6	115
DBRSSP-20-5R-11G	20	25	5	0.125	5	20.0	500	20.0	500	15.8	395	12.2	305	10.4	260	9.6	240	8.0	200	6.4	160	5.4	135	4.8	208	4.2	105	3.6	90
DBRSSP-20-5R-7G	20	25	5	0.188	5	20.0	500	20.0	500	20.0	500	20.0	500	17.7	443	16.3	408	13.7	343	11.3	283	9.7	243	8.3	303	7.5	188	6.3	158
DBRSSP-20-5R-250	20	25	5	0.250	5	20.0	500	20.0	500	20.0	500	20.0	500	20.0	500	20.0	500	18.7	468	15.9	398	13.9	348	12.1	360	10.3	258	9.1	228
DBRSSP-22-4R-11G	22	27	5	0.125	4	12.3	308	8.7	218	5.9	148	4.3	108	3.5	88	2.5	63	1.7	60	0.5	60	0.3	60	0.1	60	-	-	-	-
DBRSSP-22-4R-7G	22	27	5	0.188	4	19.8	495	14.6	365	11.2	280	8.4	210	7.0	175	6.0	150	4.4	110	3.4	85	2.2	60	2.0	95	1.6	60	1	60
DBRSSP-22-4R-250	22	27	5	0.250	4	20.0	500	20.0	500	15.4	385	12.2	305	10.4	260	9.2	230	7.4	185	5.4	135	4.2	105	3.8	75	3.2	80	2.4	60
DBRSSP-22-5R-11G	22	27	5	0.125	5	20.0	500	15.6	390	11.2	280	8.2	205	7.0	175	6.4	160	5.2	130	4.0	100	3.2	80	3.0	145	2.2	60	1.8	60
DBRSSP-22-5R-7G	22	27	5	0.188	5	20.0	500	20.0	500	19.6	490	15.2	380	13.4	335	12.0	300	10.0	250	8.4	210	6.8	170	5.8	225	5.0	125	4.6	115
DBRSSP-22-5R-250	22	27	5	0.250	5	20.0	500	20.0	500	20.0	500	20.0	500	18.8	470	17.2	430	14.4	360	12.2	305	10.2	255	9.0	225	7.6	190	6.6	165
DBRSSP-24-4R-11G	24	29	5	0.125	4	10.1	253	6.9	173	4.5	113	3.1	78	2.1	60	1.5	60	0.7	60	-	-	-	-	-	-	-	-	-	-
DBRSSP-24-4R-7G	24	29	5	0.188	4	17.3	433	12.5	313	9.1	228	6.9	173	5.5	138	4.9	123	3.1	78	1.9	60	1.5	60	1.1	60	0.5	60	0.3	60
DBRSSP-24-4R-250	24	29	5	0.250	4	20.0	500	18.0	450	13.6	340	10.0	250	9.0	225	7.8	195	5.6	140	4.4	110	3	75	2.4	60	2.2	60	1.6	60
DBRSSP-24-5R-11G	24	29	5	0.125	5	18.4	460	13.2	330	9.2	230	6.8	170	5.4	135	4.6	115	3.6	90	2.8	70	2.2	60	2	60	1.6	60	1	60
DBRSSP-24-5R-7G	24	29	5	0.188	5	20.0	500	20.0	500	16.6	415	12.6	315	11.2	280	10.0	250	8.2	205	6.6	165	5.8	145	4.6	115	4.2	105	3.6	90
DBRSSP-24-5R-250	24	29	5	0.250	5	20.0	500	20.0	500	20.0	500	18.2	455	16.4	410	14.8	370	12.0	300	10.4	260	8.8	220	7.6	190	6.6	165	5.4	135

*Pole Assemblies With EPA>9.0 Require Specific Review

CAUTION: Installation of poles without luminaire(s) will compromise pole strength. Any accessories attached to the pole, or other modifications done in the field, will compromise the pole strength and may result in pole failure. Wind load evaluations and provisions for appendages such as banner arms, signage, cameras, etc., must be evaluated and approved by the factory prior to placing an order. Additional evaluation and approval should be performed by the customer's local structural engineer on the project.



701 Kingshill Place, Carson, CA 90746
Call Us Today (310) 341-2037

nslighting.com

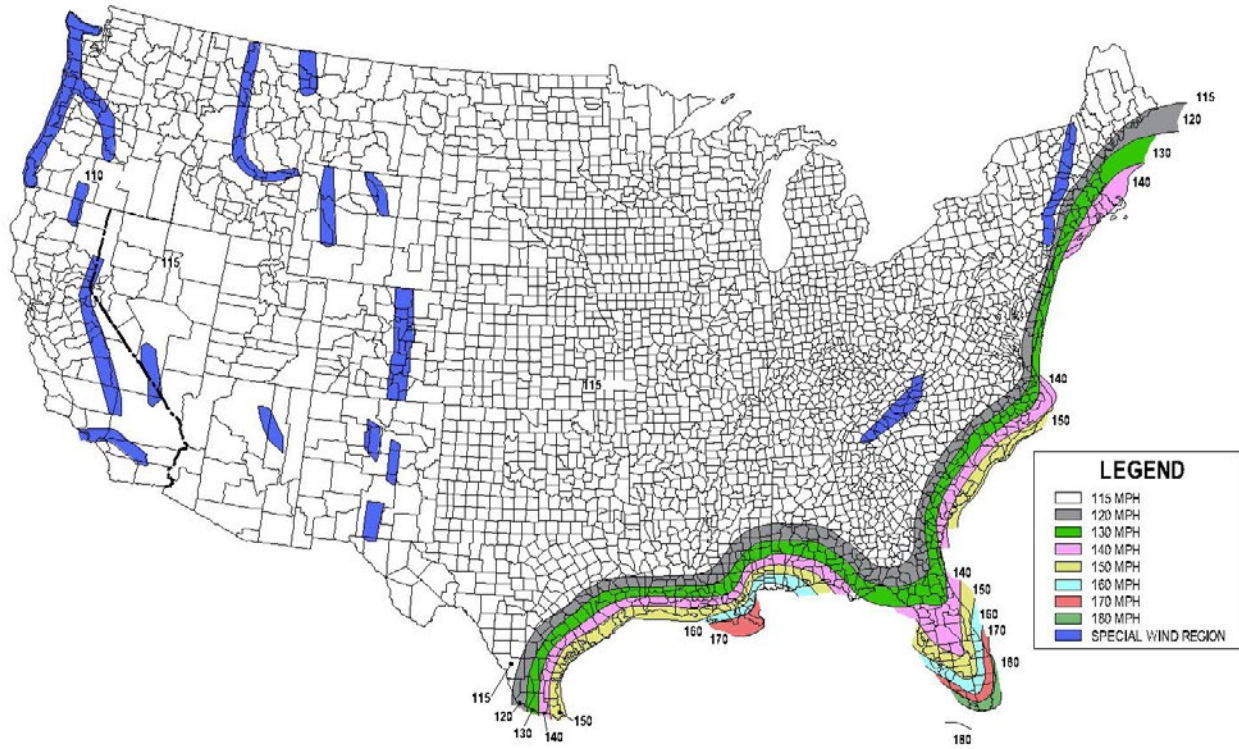


FIG. 3.8-1b - 700-Year MRI Basic Wind Speed, mph (AASHTO LRFDLTS-1)

- 1) All wind load calculations are based on sustained wind force plus and additional 1.3 gust
- 2) Wind Map is to be used as a reference only. Please coordinate with local agencies for further review.
- 3) Wind Map values are based on a 50 year mean recurrence. These values do not account for severe conditions, such as hurricanes, tornadoes, etc...
- 4) For review of poles with additional configurations (arms, banners, shorter/longer pole lengths, etc...), please contact factory.

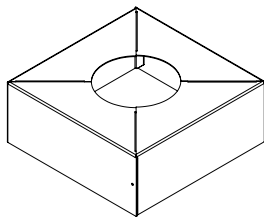
BUY AMERICAN OPTION

While all of the NLS Lighting products listed in this document qualify for the Buy America(n) Act of 1933, we reserve the right to change our listings without notice.

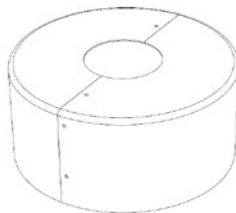
The information provided above is for general informational purposes only. We encourage you to consult legal professionals for advice particular to your projects concerning BAA, TAA, BABA or Buy America.

Additional NLS Products that meet BAA, TAA standards can be found at the following link:

[https://nlsighting.com/wp-content/uploads/cs/NLS_BuyAmerica\(n\).pdf](https://nlsighting.com/wp-content/uploads/cs/NLS_BuyAmerica(n).pdf)

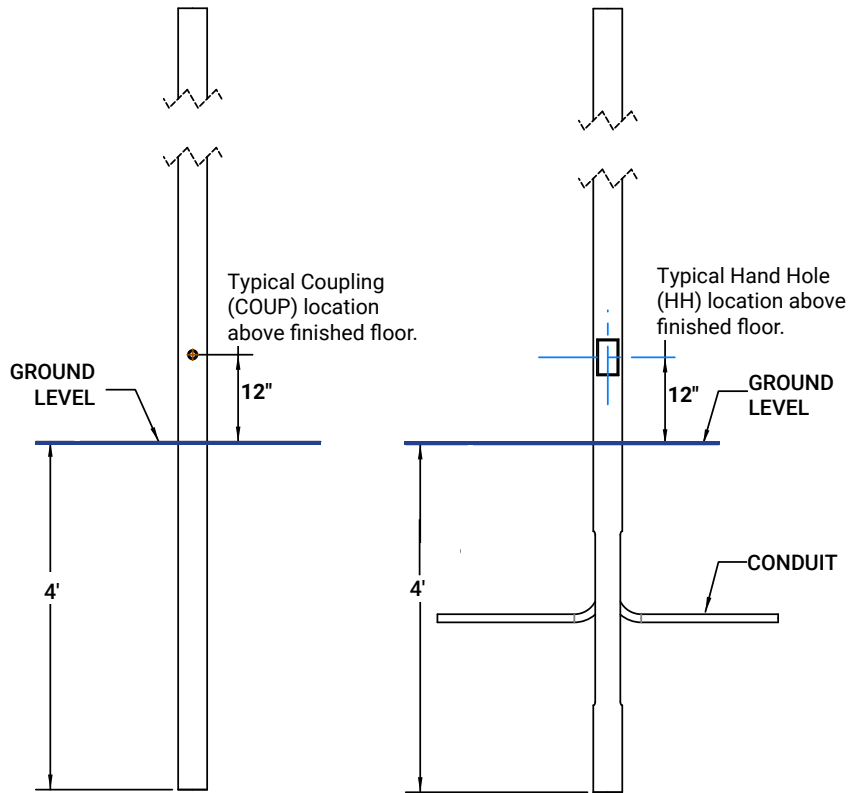
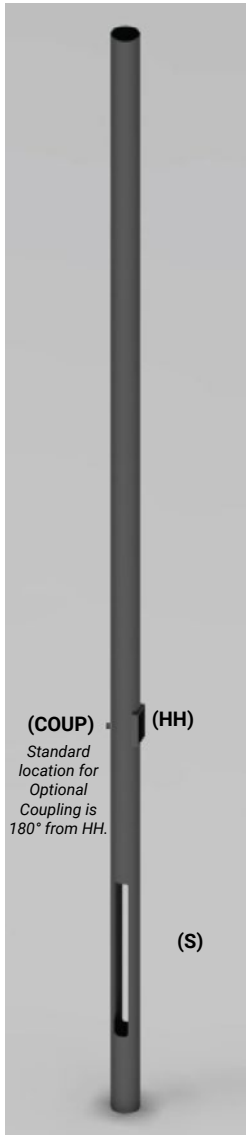


Base Cover



**Optional Round
Base Cover**

PRODUCT SPECIFICATIONS



MOUNTING CONFIGURATION

