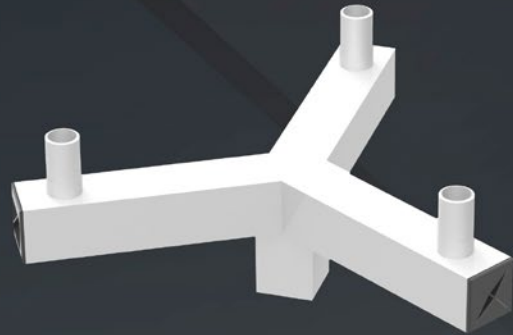


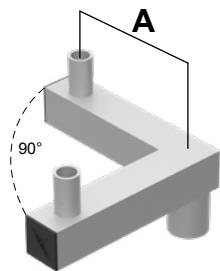
**CAR-T120**



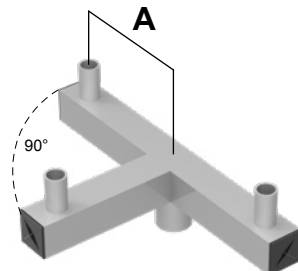
**CAS-T120**

Cross Arms are constructed of square steel tubing (11G) and can mount over 2-3/8", 3", 3-1/2", 4" and 5" diameter of Pole or Tenon. The arms are secured with 3/8" stainless steel Allen Sets Screws

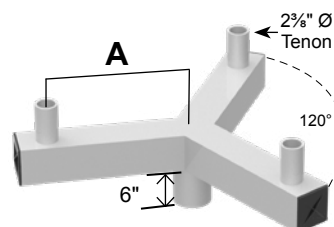
and use black plastic snap-in end caps. Please, contact NLS for custom configuration or other mounting options.



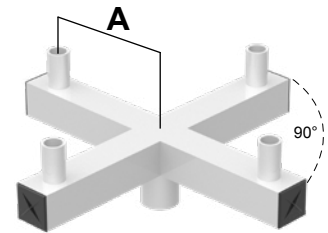
**CAR-D90**



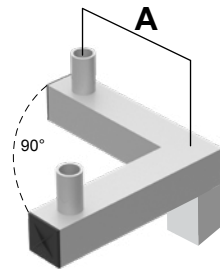
**CAR-T90**



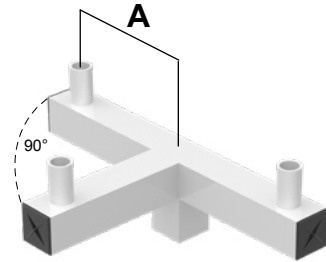
**CAR-T120**



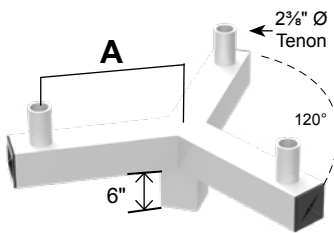
**CAR-QD**



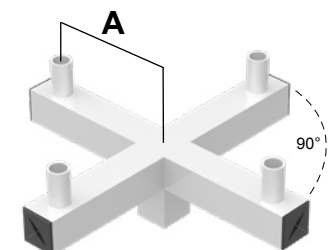
**CAS-D90**



**CAS-T90**



**CAS-T120**



**CAS-QD**

EPA	
<b>CAR-D90-18</b>	1.04
<b>CAR-T90-24</b>	2.08
<b>CAR-T120-36</b>	2.58
<b>CAR-QD-48</b>	2.08

EPA	
<b>CAS-D90-18</b>	1.32
<b>CAS-T90-24</b>	2.50
<b>CAS-T120-36</b>	3.67
<b>CAS-QD-48</b>	3.29

WEIGHT (lbs)	
<b>CAS-D90-18</b>	28.85
<b>CAS-T90-24</b>	46.20
<b>CAS-T120-36</b>	70.38
<b>CAS-QD-48</b>	59.68

WEIGHT (lbs)	
<b>CAS-D90-18</b>	28.85
<b>CAS-T90-24</b>	46.20
<b>CAS-T120-36</b>	70.38
<b>CAS-QD-48</b>	59.68



Project Name:

Type:

## CROSS ARM ROUND ORDERING GUIDE

Cat#	Distance	Pole Diameter	Color
Cross Arm Round Double 90° <b>(CAR-D90)</b>	18" <b>(18)</b>	2-3/8" Round OD <b>(238R)</b>	Bronze Textured <b>(BRZ)</b>
Cross Arm Round Triple 90° <b>(CAR-T90)</b>	12" <b>(12)</b>	3" Round OD <b>(3R)</b>	White Textured <b>(WHT)</b>
Cross Arm Round Triple 120° <b>(CAR-T120)</b>	36" <b>(36)</b>	3-1/2" Round OD <b>(312R)</b>	Smooth White Gloss <b>(SWT)</b>
Cross Arm Round Quad <b>(CAR-QD)</b>	24" <b>(24)</b>	4" Round OD <b>(4R)</b>	Silver Metallic <b>(SVR)</b>
		5" Round OD <b>(5R)</b>	Black Textured <b>(BLK)</b>
			Smooth Black Gloss <b>(SBK)</b>
			Graphite Textured <b>(GPH)</b>
			Grey Textured <b>(GRY)</b>
			Green Textured <b>(GRN)</b>
			Hunter Green Textured <b>(HGN)</b>
			Custom <b>(CS)</b>

Notes:



701 Kingshill Place, Carson, CA 90746  
Call Us Today (310) 341-2037

[nslighting.com](http://nslighting.com)

Project Name:

Type:

## CROSS ARM SQUARE ORDERING GUIDE

Cat#	Distance	Pole Diameter	Color
Cross Arm Square Double 90° <b>(CAS-D90)</b>	18" <b>(18)</b>	4" SQ <b>(4)</b>	Bronze Textured <b>(BRZ)</b>
Cross Arm Square Triple 90° <b>(CAS-T90)</b>	12" <b>(12)</b>	5" SQ <b>(5)</b>	White Textured <b>(WHT)</b>
Cross Arm Square Triple 120° <b>(CAS-T120)</b>	36" <b>(36)</b>		Smooth White Gloss <b>(SWT)</b>
Cross Arm Square Quad <b>(CAS-QD)</b>	24" <b>(24)</b>		Silver Metallic <b>(SVR)</b>
			Black Textured <b>(BLK)</b>
			Smooth Black Gloss <b>(SBK)</b>
			Graphite Textured <b>(GPH)</b>
			Grey Textured <b>(GRY)</b>
			Green Textured <b>(GRN)</b>
			Hunter Green Textured <b>(HGN)</b>
			Custom <b>(CS)</b>

Notes:



701 Kingshill Place, Carson, CA 90746  
Call Us Today (310) 341-2037

[nslighting.com](http://nslighting.com)