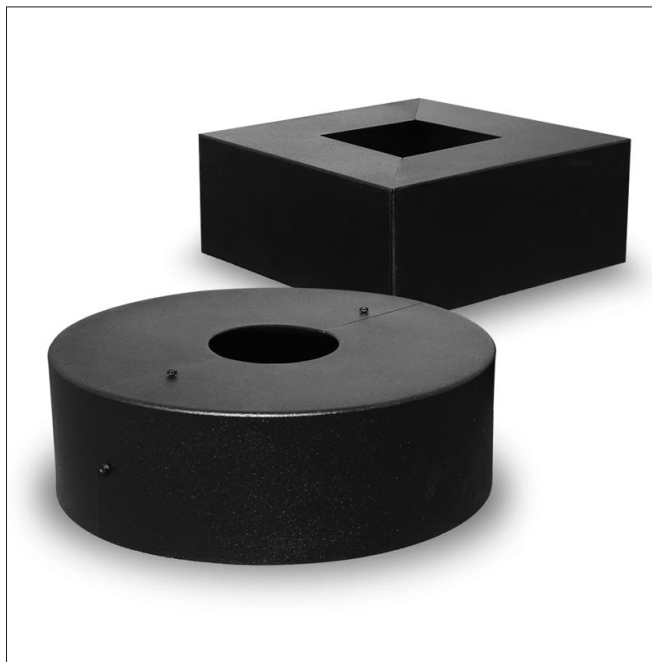
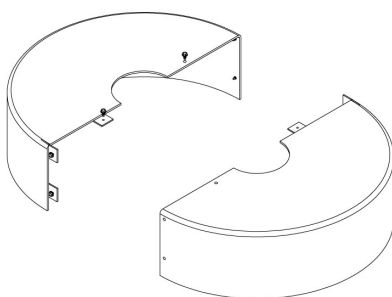
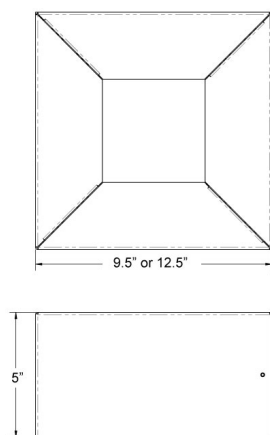


Standard Base Cover are constructed from heavy gauged aluminum. Our two-Piece, 5" tall Base Cover is easy to install and available in round and square dimensions. Base Covers are designed for round poles that measure 3" to 6" wide and square poles that measure 4" to 6" wide. Base covers are finished with a 5 millimeter high-quality rich textured powder coat to match pole color.

Designed, tooled, manufactured and assembled in the USA.



Project Name:

Type:

Cat #	Pole Dim.	Color	Options
Round Base Cover-1 14" OD (For 9" SQ. Base plate) (RBC-1)	Round Pole 3" Round (3R) 4" Round (4R)	Bronze (BRZ) White (WHT)	Vandal Proof (VP)
Round Base Cover-2 18" OD (For 12" SQ. Base plate) (RBC-2)	5" Round (5R) 6" Round (6R)	Silver (SVR)	
Square Base Cover-1 9.5" SQ (For 9" SQ. Base plate) (SBC-1)	Square Pole 4" Square (4S) 5" Square (5S)	Black (BLK) Green (GRN)	
Square Base Cover-2 12.5" SQ (For 12" SQ. Base plate) (SBC-2)	6" Square (6S)	Graphite (GPH) Custom (CS)	
Square Base Cover-3 15" SQ 5" Tall (For XXX" SQ. Base plate) (SBC-3)			