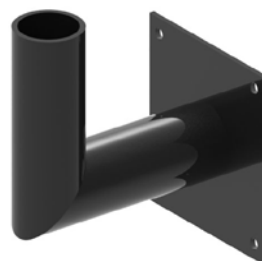


Bull Horn Arms are constructed of 2-3/8" OD (11G) steel tubing and are available at 10", 14" or 24" lengths. Bull Horn Pole Mounted Top (**BH-PMT**) arms are welded as one piece, ready to slip over a round pole or tenon with black plastic snap-in end

caps. Bull Horn Pole Mounted Clamped arms (**BH-PMC**) can be installed onto round or square poles, secured with 3/8" stainless steel Allen Set Screws. Consult with factory for a custom configuration. Hardware not included.



Bull Horn Wood Pole
BH-WP



Bull Horn Wall Mount
BH-WM



Project Name:

Type:

BULL HORN ARM ORDERING GUIDE

Cat#	Arm Length	Mounting	Pole Diameter	Color
Bull Horn Pole Mounted Top (BH-PMT) ❶	10" (10)	BH-PMT Single (SGL)	3" SQ (3S)	Bronze Textured (BRZ)
Bull Horn Pole Mounted Clamp (BH-PMC) ❷	14" (14)	Double 90° (D90)	3-1/2" SQ (312S)	White Textured (WHT)
	24" (24)	Double 180° (D180)	4" SQ (4S)	Smooth White Gloss (SWT)
Bull Horn Wall Mount (BH-WM) ❸		Triple 90° (T90)	4-1/2" SQ (412S)	Silver Metallic (SVR)
		Triple 120° (T120)	5" SQ (5S)	Black Textured (BLK)
Bull Horn Wood Pole (BH-WP) ❸		Quad (QD)	5-1/2" (512S)	Smooth Black Gloss (SBK)
		BH-PMC Single (SGL)	2-3/8" OD (238R)	Graphite Textured (GPH)
		Double 180° (D180)	3" OD (3R)	Grey Textured (GRY)
		BH-WM Single (SGL)	3-1/2" OD (312R)	Green Textured (GRN)
		BH-WP Single (SGL)	4" OD (4R)	Hunter Green Textured (HGN)
			4-1/2" OD (412R)	Custom (CS)
			5" OD (5R)	
			5-1/2" OD (512R)	
			Wall Mount (WM)	

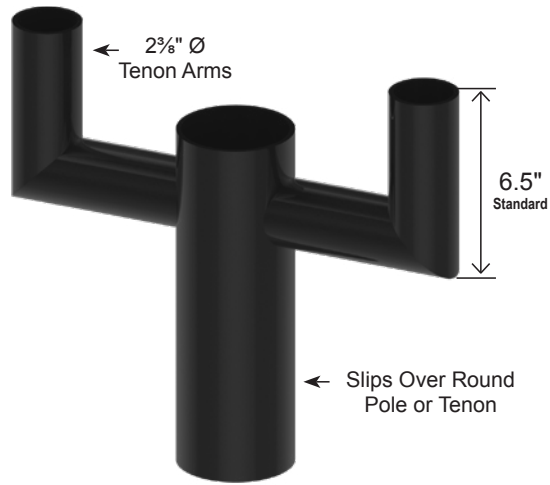
Notes:

- ❶ Welded as whole piece Arm + Adaptor
- ❷ Allows Mid-Pole Mounting
- ❸ Can not be Mounted Over a Pole

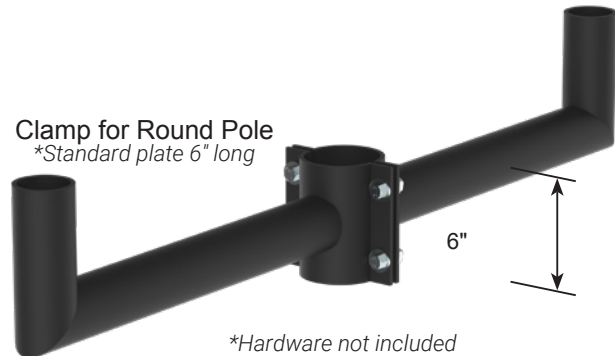
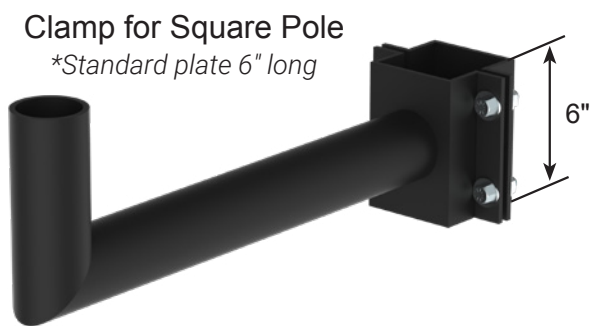


701 Kingshill Place, Carson, CA 90746
Call Us Today (310) 341-2037

nlsighting.com



Bull Horn Pole Mounted Top (Double 180°)
BH-PMT



Bull Horn Pole Mounted Clamp
BH-PMC

EPA	SINGLE	DOUBLE
10"	.35	.60
14"	.41	.70
24"	.58	1.04

